

GENERAL NOTES

SHELTER DESIGN

THIS SHELTER HAS BEEN DESIGNED AS AN OPEN STRUCTURE. THE ADDITION OF ANY ENCLOSURE SUCH AS WALLS, INSECT MESH, OR SHADE SCREENS SHALL BE PROHIBITED AS INCREASED WIND FORCES MAY RESULT.

STEEL

STEEL PLATE SHALL CONFORM TO THE REQUIREMENTS OF ASTM A36.

HOLLOW STRUCTURAL SECTIONS (HSS) SHALL CONFORM TO THE REQUIREMENTS OF ASTM A500, GRADE B (Fy = 46 KSI).

WELDING SHALL CONFORM TO THE REQUIREMENTS OF THE AMERICAN WELDING SOCIETY'S SPECIFICATIONS FOR THE MATERIAL BEING WELDED.

WELDING ELECTRODES SHALL BE E70XX.

STRUCTURAL STEEL COMPONENTS SHALL BE COATED WITH ANTI-GRAFFITI POLYESTER TGIC POWDER COAT FINISH MEETING AAMA 2604-02 SPECIFICATION.

ALUMINUM

EXTRUDED ALUMINUM RIDGE CAP SHALL BE FABRICATED FROM ALUMINUM ALLOY 6105-T5 AND SHALL CONFORM TO THE REQUIREMENTS SHOWN ON THE DRAWING.

EXTRUDED ALUMINUM GUTTER FASCIA AND FASCIA TRIM SHALL BE FABRICATED FROM ALUMINUM ALLOY 6105-T5 OR 6061-T6 AND SHALL CONFORM TO THE REQUIREMENTS SHOWN ON THE DRAWING.

ALUMINUM COMPONENTS SHALL BE COATED WITH ANTI-GRAFFITI POLYESTER POWDER COAT FINISH MEETING AAMA 2604-02 SPECIFICATION.

ROOF DECK

INTERLOCKING SEAL ALUMINUM ROOF DECK SHALL BE ROLL FORMED FROM ALUMINUM ALLOY 3004-H36 AND SHALL CONFORM TO THE DECK PROFILE SHOWN ON THE DRAWING.

ROOF DECK SHALL BE COATED WITH HEAT REFLECTIVE BASF ULTRA-COOL COATING OR APPROVED EQUAL.

FASTENERS

HIGH STRENGTH BOLTS SHALL CONFORM TO ASTM A325.

SCREWS ATTACHING TO STEEL SHALL BE 12-24 HEX WASHER HEAD #5 POINT SELF DRILLING SCREWS WITH BOND SEAL WASHER.

SCREWS ATTACHING TO ALUMINUM SHALL BE 8-18 HEX WASHER HEAD #2 POINT SELF DRILLING SCREWS.

HIGH STRENGTH BOLTS SHALL BE HOT DIP GALVANIZED. ALL SCREWS SHALL BE STAINLESS STEEL OR COATED WITH ZINC.

ALL BOLTS SHALL BE TIGHTENED TO A SNUG-TIGHT CONDITION AS DEFINED IN THE 2004 RESEARCH COUNCIL ON STRUCTURAL CONNECTIONS (RCSC) SPECIFICATION FOR STRUCTURAL JOINTS USING A325 OR A490 BOLTS.

SHOP FABRICATION AND FIELD ASSEMBLY

ALL STRUCTURAL STEEL AND ALUMINUM COMPONENTS SHALL BE SHOP FABRICATED SO THAT FIELD ASSEMBLY OF CONNECTIONS CAN BE PERFORMED USING ONLY BOLTING AND SCREW PLACEMENT.

ALL SHOP WELDING TO BE PERFORMED BY AWS CERTIFIED WELDERS.

ALL SHOP WELDS SHALL BE IN STRICT ACCORDANCE WITH THE STRUCTURAL WELDING CODE AWS D1.1 OF THE AMERICAN WELDING SOCIETY SPECIFICATIONS. ALL STRUCTURAL WELDS SHALL BE IN COMPLIANCE WITH THE REQUIREMENTS OF "PRE-QUALIFIED" WELDED JOINTS. ALL WELDING SHALL CONFORM TO AWS A5.18 : ER70S-6 SERIES E70XX ELECTRODES - LOW HYDROGEN.

FIELD WELDING SHALL NOT BE REQUIRED.

SPECIAL INSPECTIONS

THIS SHELTER IS CLASSIFIED AS AN ACCESSORY AND/OR MISCELLANEOUS STRUCTURE AND SHALL BE CONSIDERED CONSTRUCTION OF A MINOR NATURE. THEREFORE SPECIAL INSPECTIONS SHALL NOT BE REQUIRED PER IBC 1704.2.

DESIGN PARAMETERS

BUILDING CODES:

2018 IBC
ASCE 7-16

ROOF DEAD LOAD: 5 PSF

ROOF LIVE LOAD: 20 PSF

GROUND SNOW LOAD: 35 PSF

ROOF SNOW LOAD: 29.4 PSF

BASIC WIND SPEED: 115 MPH (3 SECOND GUST)

WIND EXPOSURE: C

SOIL BEARING STRENGTH: 1500 PSF

SOIL SITE CLASS: D (ASSUMED)

SEISMIC SS: 0.121

SEISMIC S1: 0.043

SEISMIC SDS: 0.129

SEISMIC SD1: 0.069

SEISMIC DESIGN CATEGORY: B

TRANSVERSE SEISMIC RESISTING SYSTEM: STEEL ORDINARY MOMENT FRAME

TRANSVERSE RESPONSE MODIFICATION FACTOR: 3.50

TRANSVERSE SEISMIC RESPONSE COEFFICIENT: 0.037

LONGITUDINAL SEISMIC RESISTING SYSTEM: STEEL ORDINARY CANTILEVER COLUMN

LONGITUDINAL RESPONSE MODIFICATION FACTOR: 1.25

LONGITUDINAL SEISMIC RESPONSE COEFFICIENT: 0.103

SEISMIC ANALYSIS PROCEDURE: EQUIVALENT LATERAL FORCE

BUILDING DATA

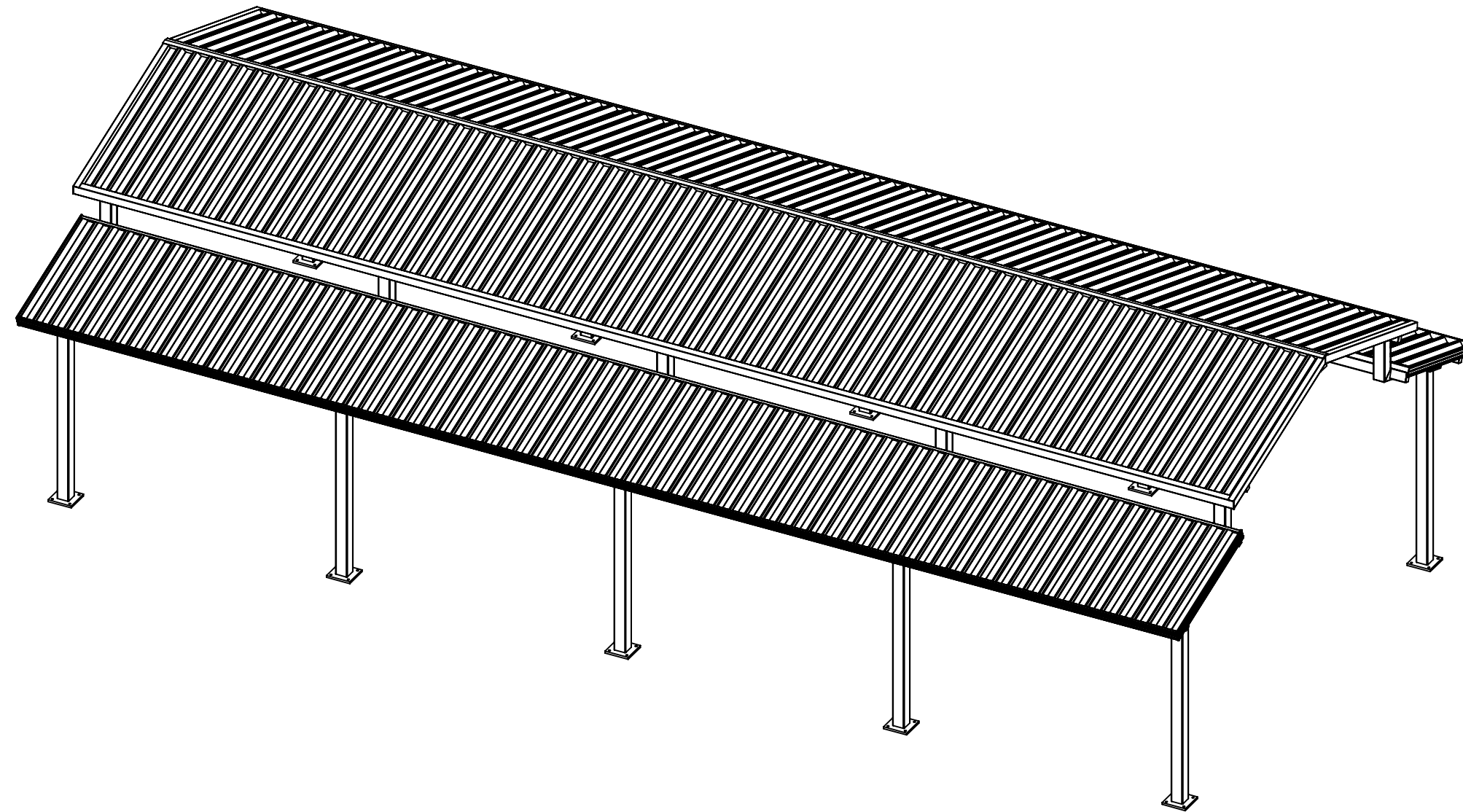
OCCUPANCY CLASSIFICATION: U (ACCESSORY / MISC.)

RISK CATEGORY: II

CONSTRUCTION TYPE: II-B

FLOOR AREA: 1200 SQ. FT.

OCCUPANCY LOAD: 7 SQ. FT. / OCCUPANT = 171 OCCUPANTS



CONTENTS

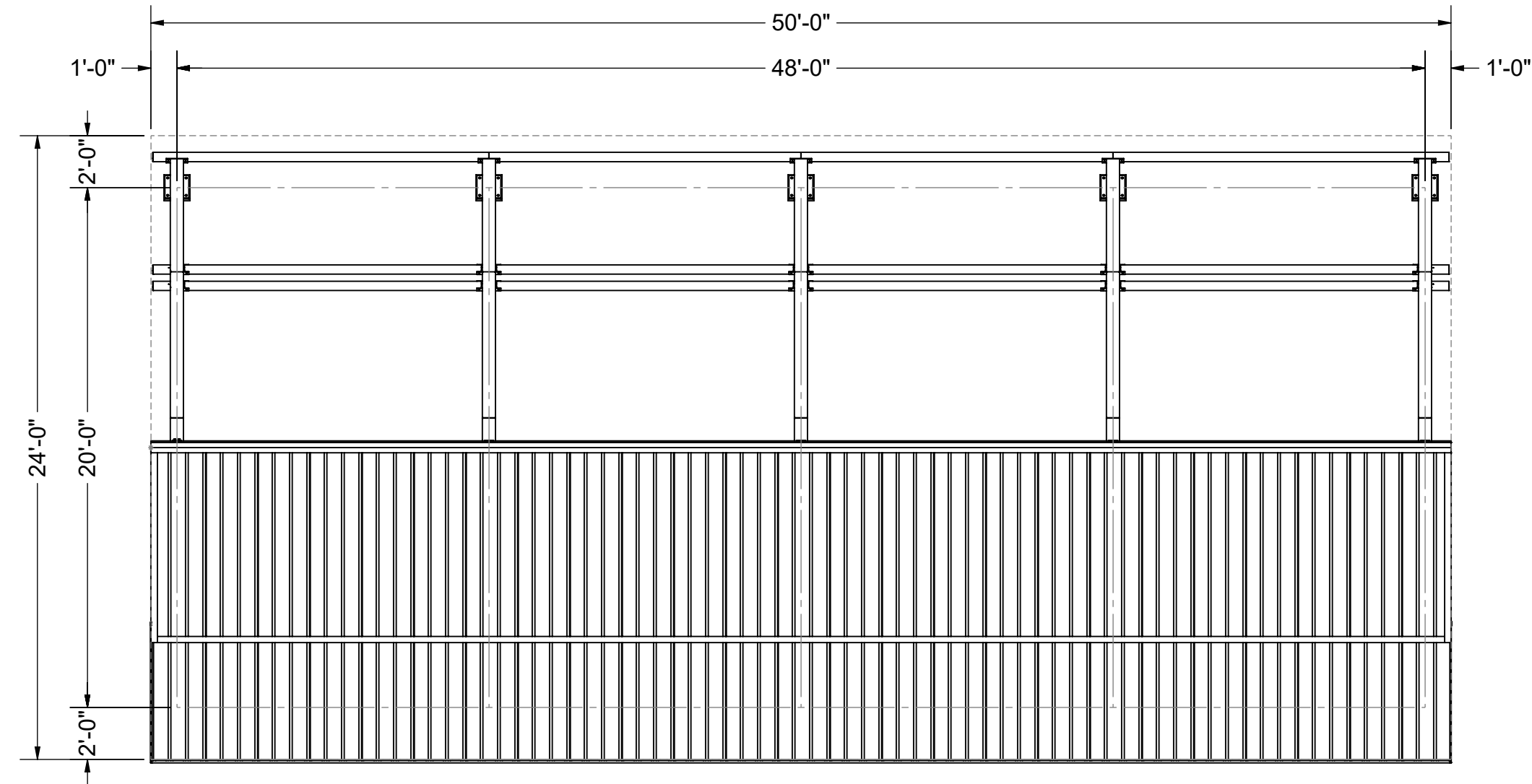
- C1 COVER SHEET
- S1 PLAN AND ELEVATIONS
- S2 FOUNDATION PLAN AND SECTION
- S3 STRUCTURAL FRAMING
- S4 FRAMING CONNECTION DETAILS
- S5 ROOFING DETAILS
- D1-D10 STEEL FABRICATION DETAILS

SEAL

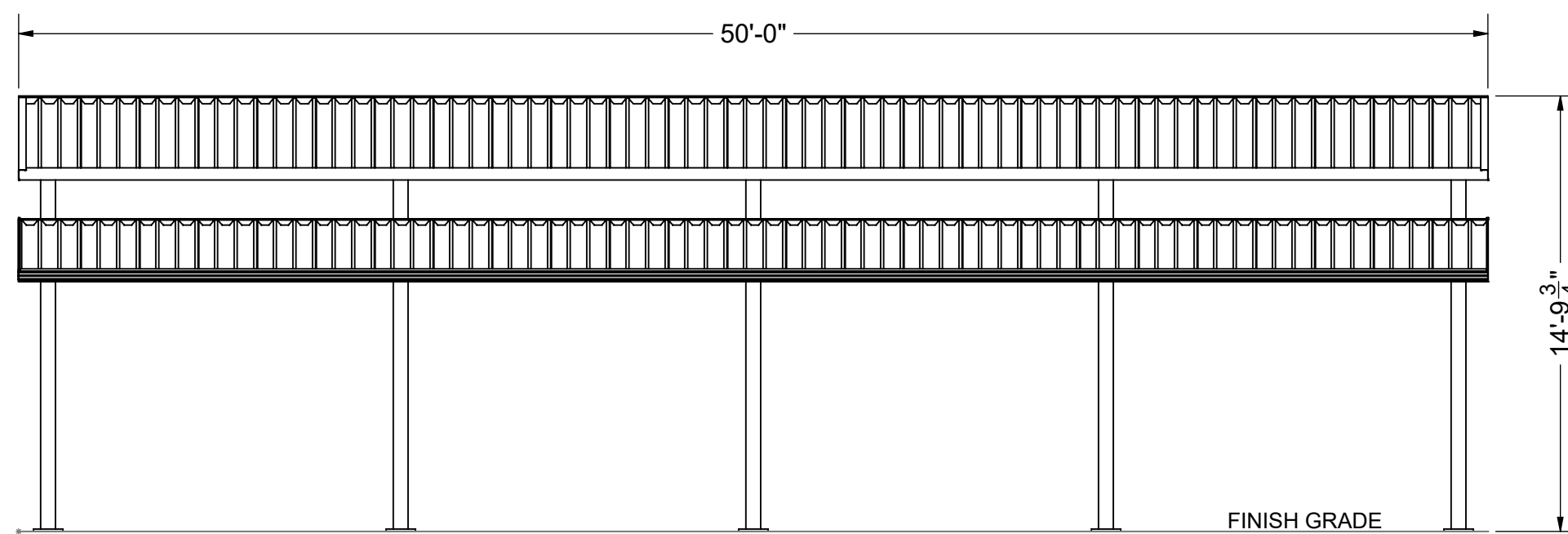


Dr. Al Gonzalez P.E.
DOTec Corp
424 Jefferson Street
St. Charles, MO 63301
PH 636-724-9872
EX 636-724-9032
WWW.DOTENGINEERING.COM
AL@DOTENGINEERING.COM

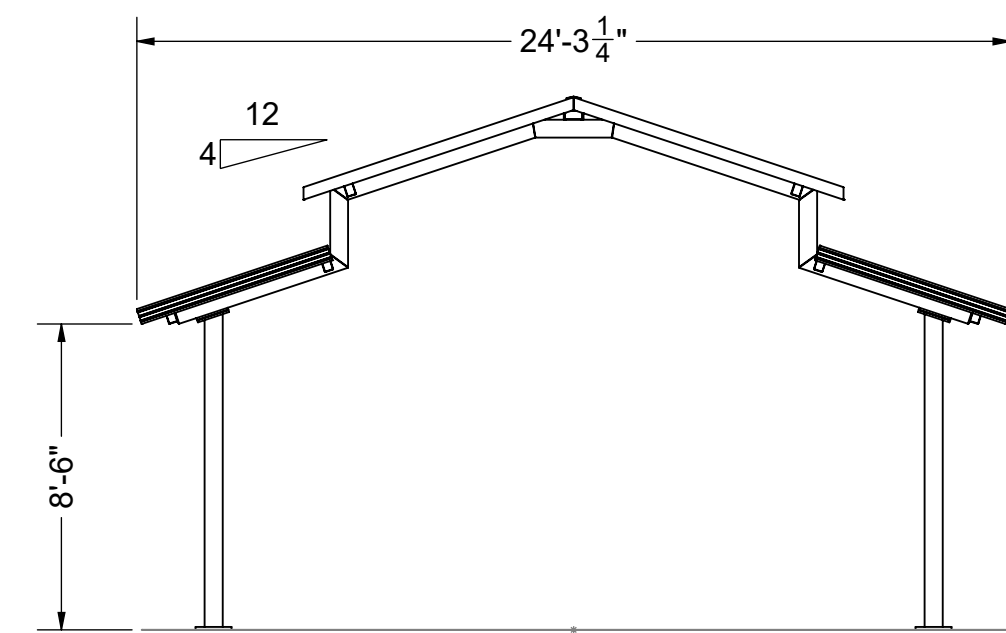
ENGINEER DOTec ENGINEERING ADDRESS: 424 JEFFERSON STREET ST CHARLES, MO 63301 PHONE: (636) 724-9872 WEB: www.dotecengineering.com	MANUFACTURER AMERICANA OUTDOORS ADDRESS: #2 INDUSTRIAL DRIVE SALEM, IL 62881 PHONE: (800) 851-0865 WEB: www.americana.com	PROJECT / LOCATION 273 WOODBURY AVE. MARTINSBURG, WV 25404	MODEL 24' x 50' ILLINI SHELTER	DWG. NO. 222129	DRAWN BY TG	DRAWN DATE 8/19/2024	SHEET C1 OF 16 SHEETS
				JOB NO. 222129			
				P.O. NO. P24-188			



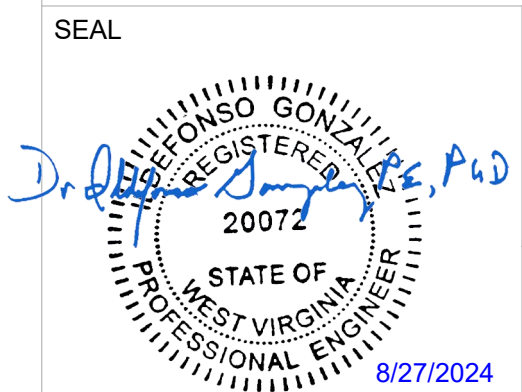
ROOF PLAN
Scale: 3/16" = 1'-0"



FRONT ELEVATION
Scale: 3/16" = 1'-0"



SIDE ELEVATION
Scale: 3/16" = 1'-0"



Dr. Al Gonzalez P.E.
DOTec Corp
424 Jefferson Street
St. Charles, MO 63301
PH 636-724-9872
EX 636-724-9032
WWW.DOTECENGINEERING.COM
ALG@DOTECENGINEERING.COM

ENGINEER DOTec ENGINEERING ADDRESS: 424 JEFFERSON STREET ST CHARLES, MO 63301 PHONE: (636) 724-9872 WEB: www.dotecengineering.com	MANUFACTURER AMERICANA OUTDOORS ADDRESS: #2 INDUSTRIAL DRIVE SALEM, IL 62881 PHONE: (800) 851-0865 WEB: www.americana.com	PROJECT / LOCATION 273 WOODBURY AVE. MARTINSBURG, WV 25404	MODEL 24' x 50' ILLINI SHELTER	DWG. NO. 222129	DRAWN BY TG	DRAWN DATE 8/19/2024	SHEET S1 OF 16 SHEETS
				JOB NO. 222129			
				P.O. NO. P24-188			

NOTES

FOUNDATION

THE FOUNDATION SHALL REST ON SOUND SOIL THAT IS FREE OF ORGANIC AND DELETERIOUS MATERIALS AND CAPABLE OF SUPPORTING 1500 PSF VERTICAL BEARING PRESSURE AND 100 PSF/FT LATERAL BEARING PRESSURE.

FOUNDATION DESIGN SHOWN IS BASED ON THE MINIMUM PRESUMPTIVE SOIL STRENGTHS FROM THE SPECIFIED BUILDING CODE. OWNER SHALL VERIFY ACTUAL SOIL CONDITIONS AT EACH JOB SITE AND ANY REQUIRED ADJUSTMENTS TO THE FOUNDATION DESIGN SHALL BE DESIGNED BY OTHERS.

IF NECESSARY, EXTEND DEPTH OF FOOTING TO MEET LOCAL FROST DEPTH REQUIREMENTS AND ADD TIES TO MEET THE SPACING REQUIREMENT STATED ON THE DRAWING.

CONCRETE

COMPRESSION STRENGTH OF ALL REINFORCED CONCRETE SHALL NOT BE LESS THAN 3500 PSI AT 28 DAYS.

REINFORCING BARS SHALL BE DEFORMED BARS CONFORMING TO THE REQUIREMENTS OF MINIMUM ASTM A615 GRADE 40 FOR #4 AND SMALLER BARS AND GRADE 60 FOR BARS LARGER THAN #4.

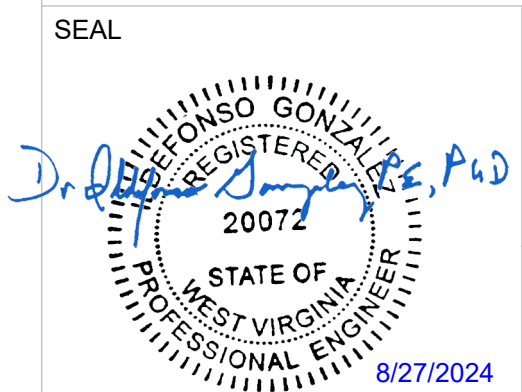
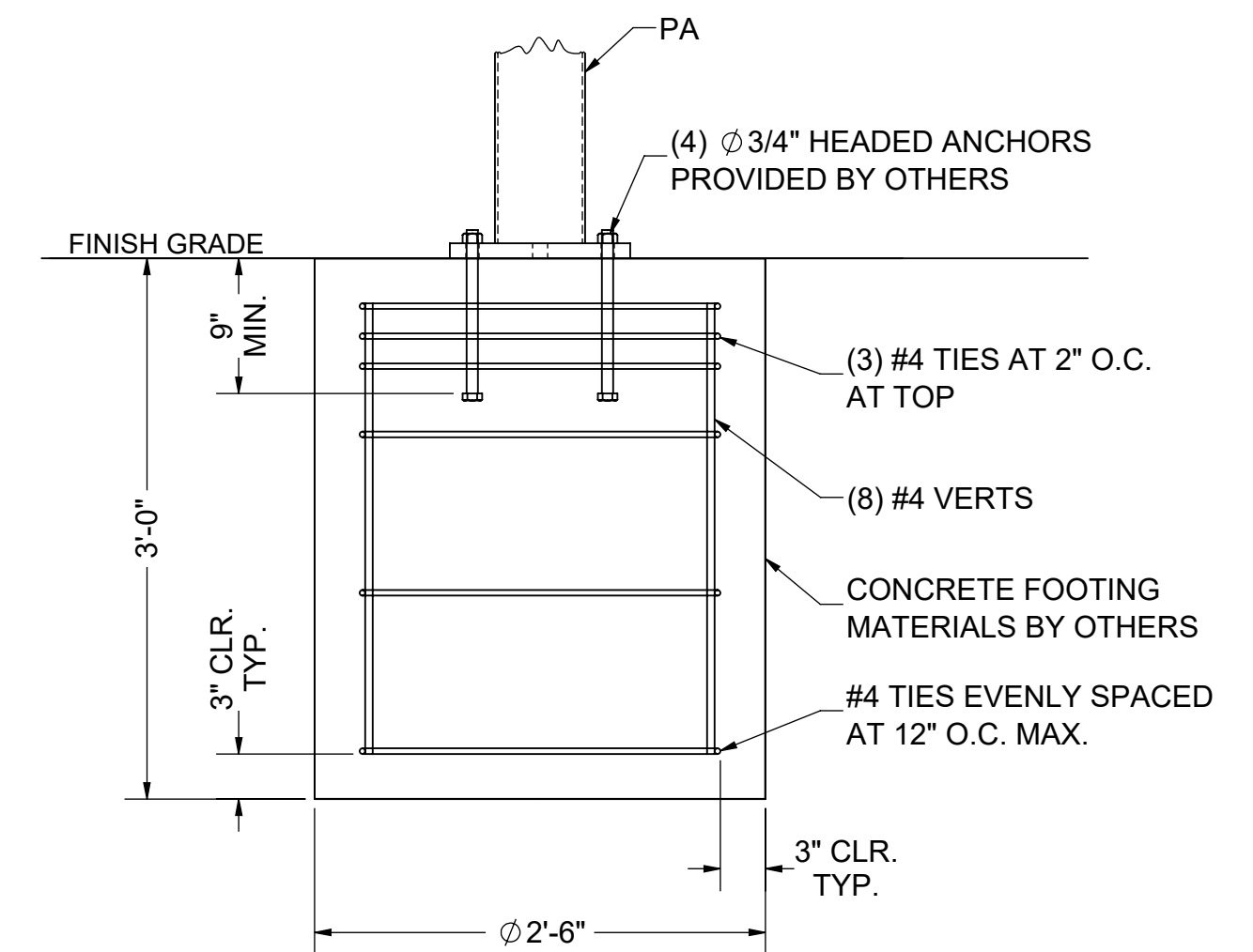
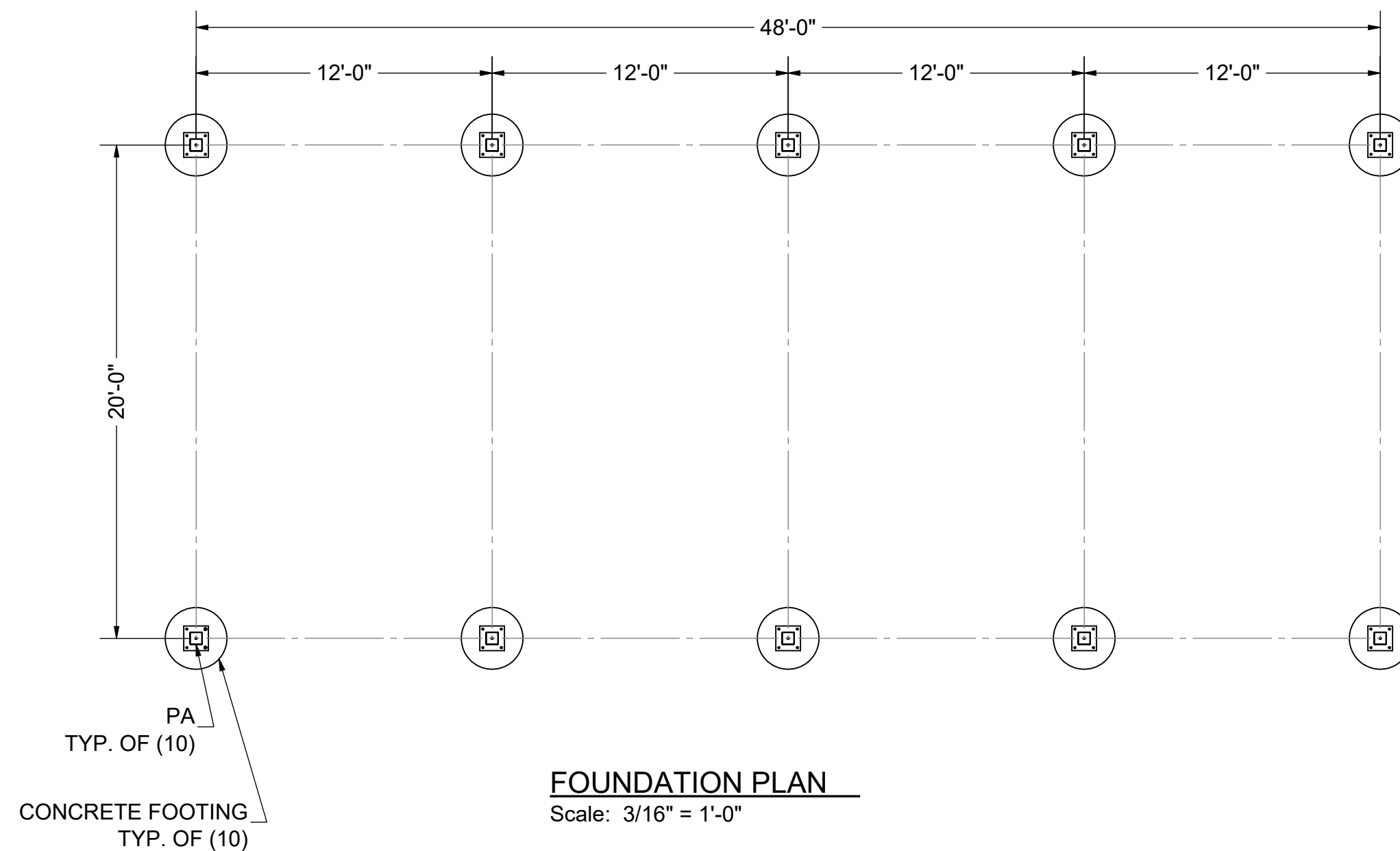
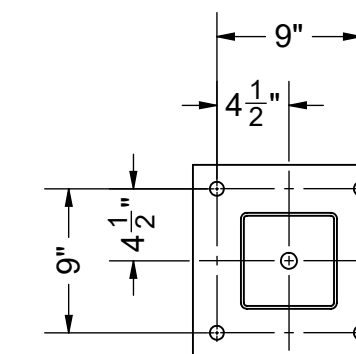
MINIMUM CONCRETE COVER FOR REINFORCING BARS SHALL BE 3" UNLESS NOTED OTHERWISE.

ANCHOR RODS SHALL BE ASTM F1554 GRADE 36 MINIMUM, GALVANIZED ROD, HEADED OR WITH HEAVY HEX NUT TACKED TO ROD.

FOUNDATION REACTIONS (ASD MAX.)

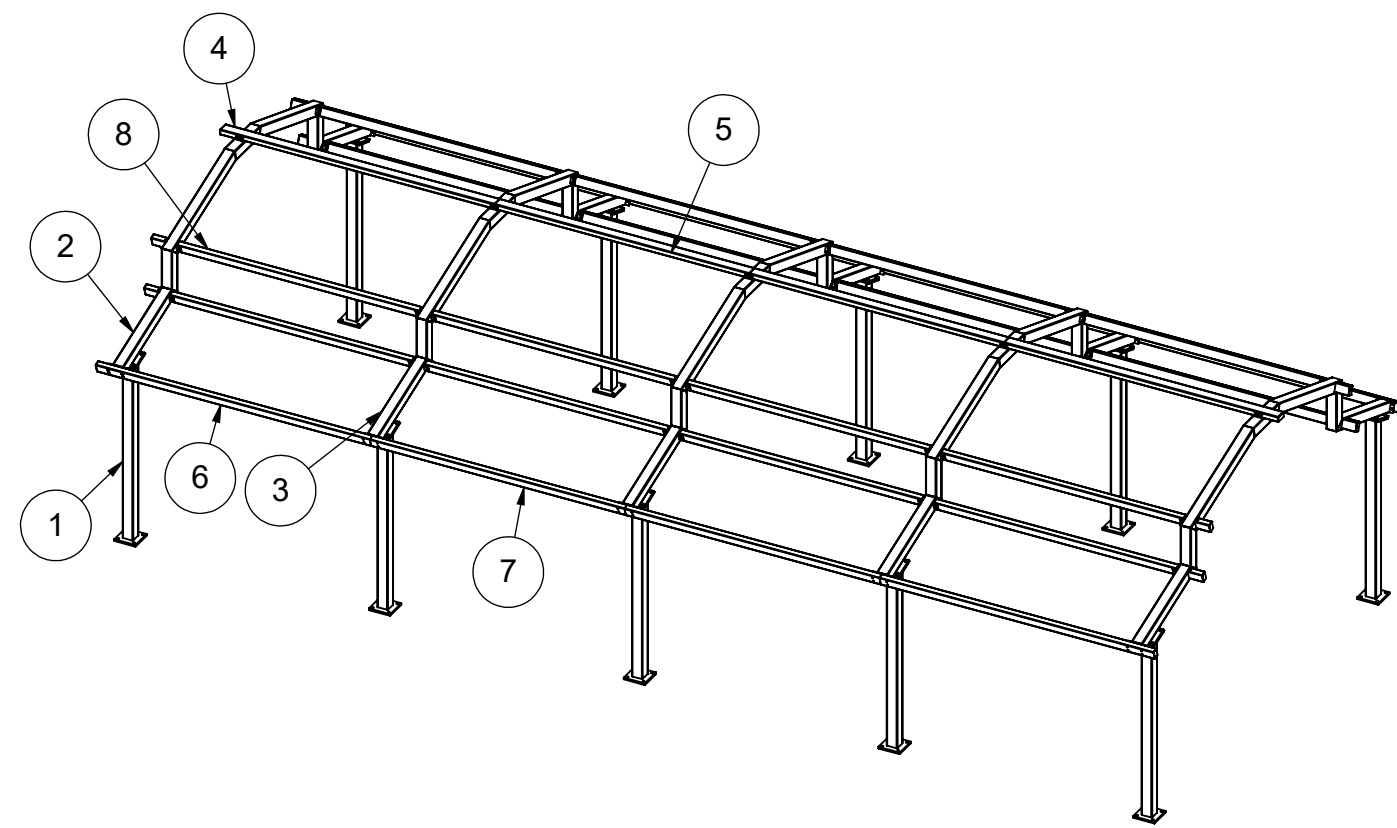
AXIAL: 6.394 KIP
 UPLIFT: 0.734 KIP
 LATERAL: 1.100 KIP
 MOMENT: 0.637 K-FT

NOTE: FOOTING DESIGNED AS CONSTRAINED

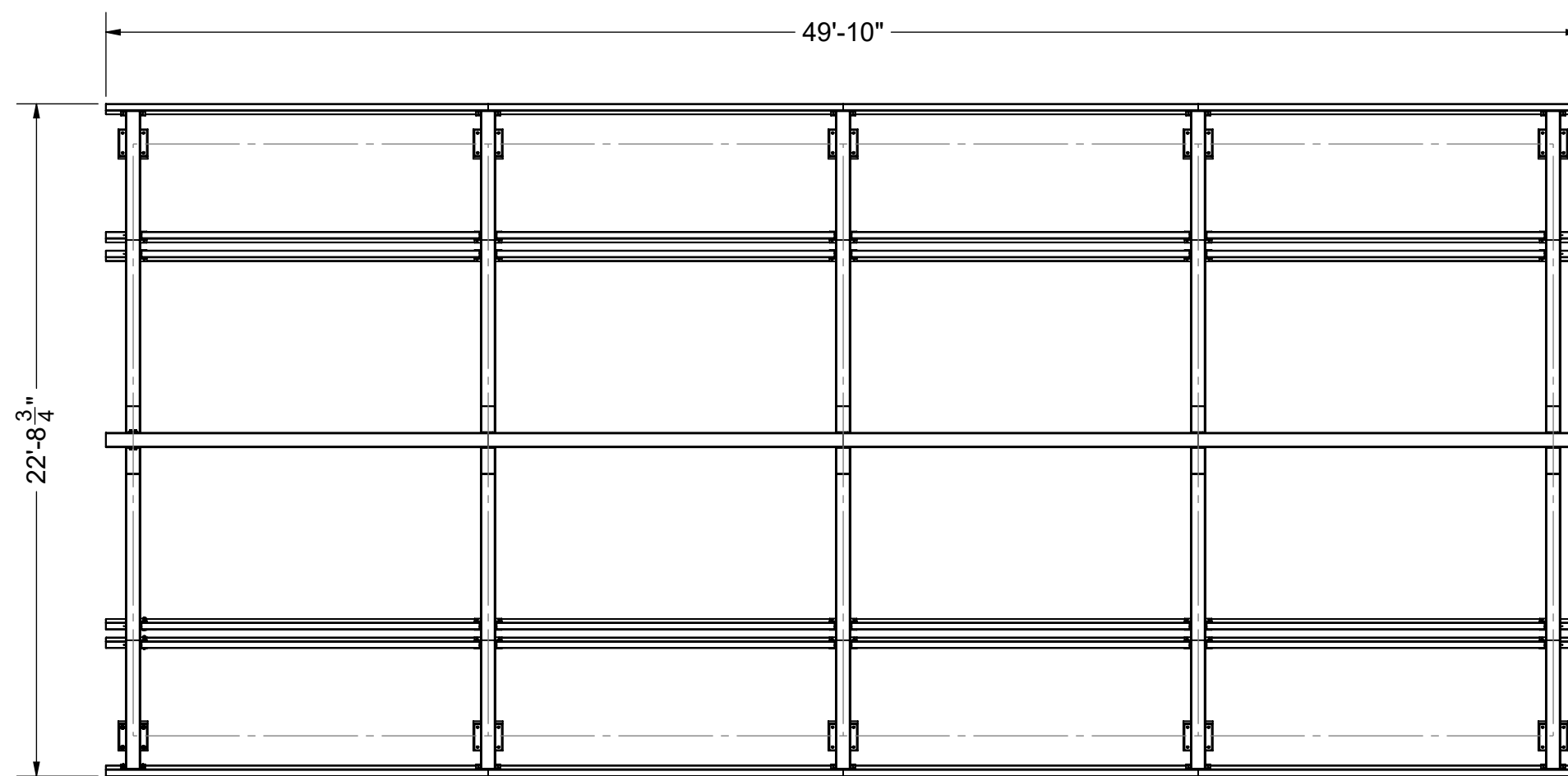


Dr. Al Gonzalez P.E.
 DOTec Corp
 424 Jefferson Street
 St. Charles, MO 63301
 PH 636-724-9872
 FX 636-724-9032
 WWW.DOTECENGINEERING.COM
 ALG@DOTECENGINEERING.COM

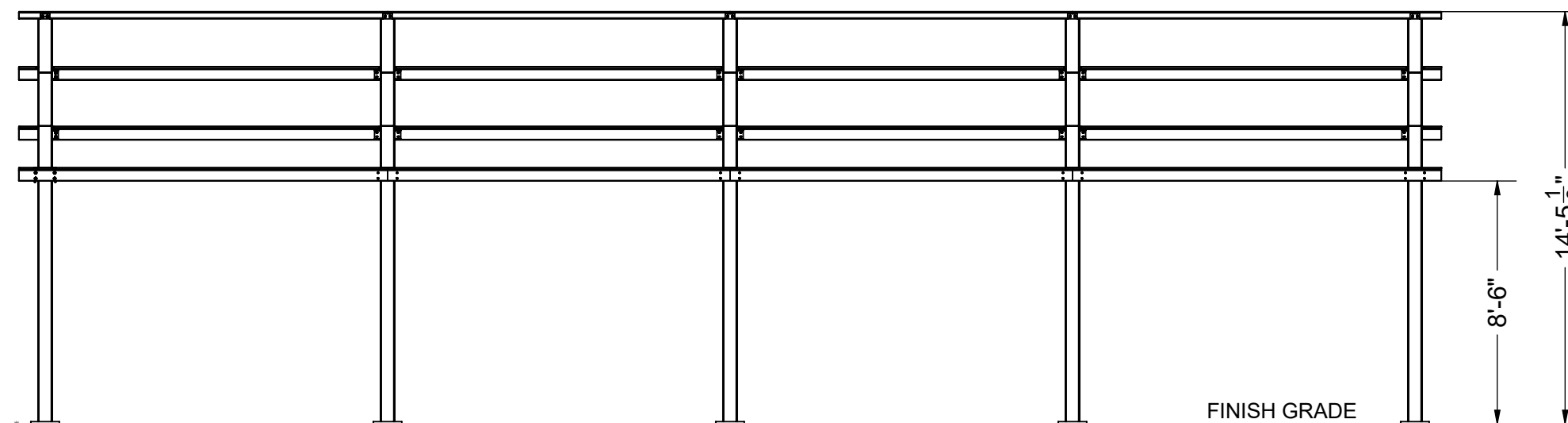
ENGINEER DOTec ENGINEERING ADDRESS: 424 JEFFERSON STREET ST CHARLES, MO 63301 PHONE: (636) 724-9872 WEB: www.dotecengineering.com	MANUFACTURER AMERICANA OUTDOORS ADDRESS: #2 INDUSTRIAL DRIVE SALEM, IL 62881 PHONE: (800) 851-0865 WEB: www.americana.com	PROJECT / LOCATION 273 WOODBURY AVE. MARTINSBURG, WV 25404	MODEL 24' x 50' ILLINI SHELTER	DWG. NO. 222129	DRAWN BY TG	DRAWN DATE 8/19/2024	SHEET S2 OF 16 SHEETS
				JOB NO. 222129			
				P.O. NO. P24-188			



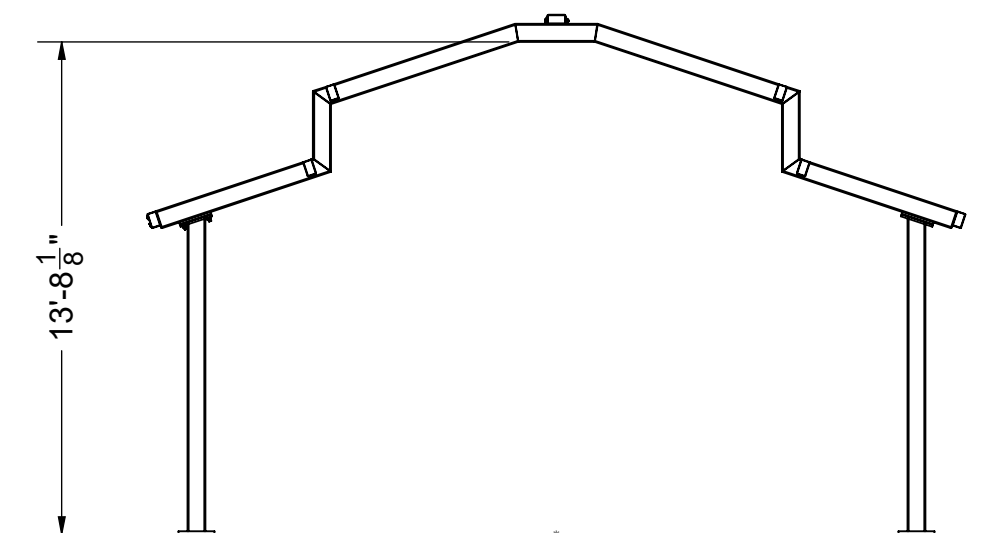
ITEM NO.	QTY.	PART NO.	DESCRIPTION	MATERIAL	EST. WEIGHT (LBS)
1	10	PA	POST	HSS 6x6x3/16"	188.48
2	2	RA	RAFTER	HSS 6x6x3/16"	467.12
3	3	RB	RAFTER	HSS 6x6x3/16"	452.89
4	2	TA	RIDGE BEAM	HSS 6x3x3/16"	136.91
5	2	TB	RIDGE BEAM	HSS 6x3x3/16"	126.6952
6	4	EA	EDGE BEAM	HSS 5x3x1/8"	82.68
7	4	EB	EDGE BEAM	HSS 5x3x1/8"	76.4117
8	16	SA	PURLIN	HSS 5x3x1/8"	72.69



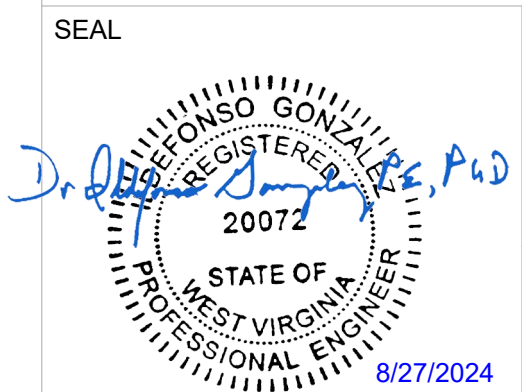
FRAME PLAN
Scale: 3/16" = 1'-0"



FRAME ELEVATION
Scale: 3/16" = 1'-0"

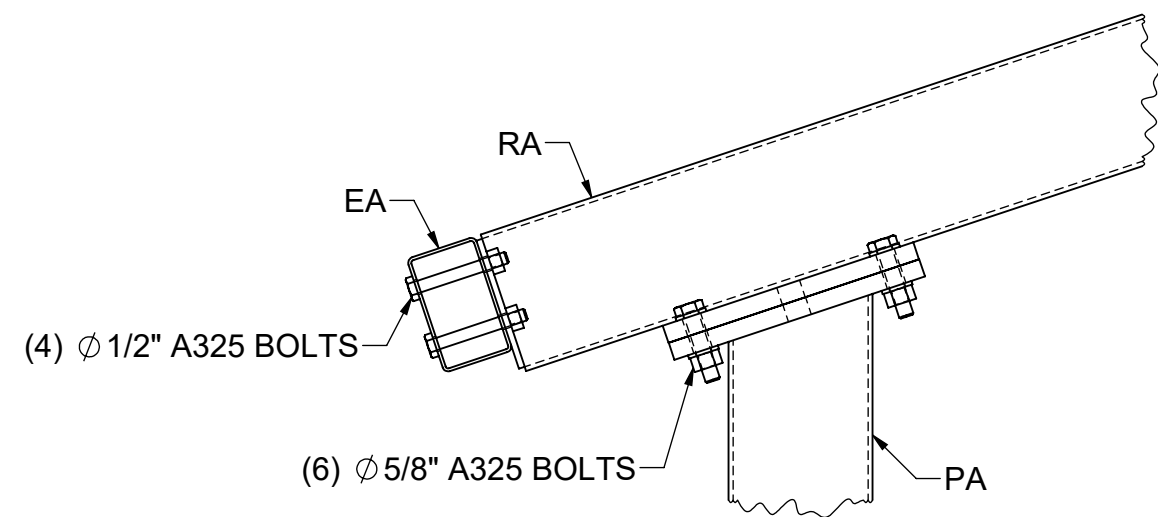


FRAME ELEVATION
Scale: 3/16" = 1'-0"

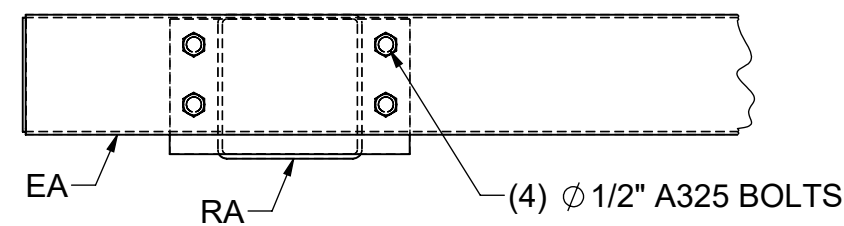


Dr. Al Gonzalez P.E.
DOTec Corp
424 Jefferson Street
St. Charles, MO 63301
PH 636-724-9872
EX 636-724-9032
WWW.DOTECENGINEERING.COM
ALG@DOTECENGINEERING.COM

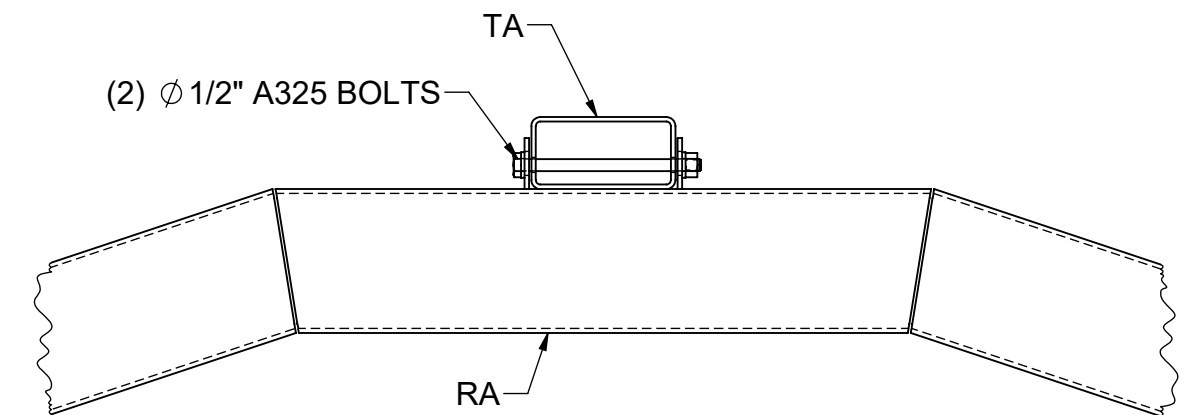
ENGINEER DOTec ENGINEERING ADDRESS: 424 JEFFERSON STREET ST CHARLES, MO 63301 PHONE: (636) 724-9872 WEB: www.dotecengineering.com	MANUFACTURER AMERICANA OUTDOORS ADDRESS: #2 INDUSTRIAL DRIVE SALEM, IL 62881 PHONE: (800) 851-0865 WEB: www.americana.com	PROJECT / LOCATION 273 WOODBURY AVE. MARTINSBURG, WV 25404	MODEL 24' x 50' ILLINI SHELTER	DWG. NO. 222129	DRAWN BY TG	DRAWN DATE 8/19/2024	SHEET S3 OF 16 SHEETS
				JOB NO. 222129			
				P.O. NO. P24-188			



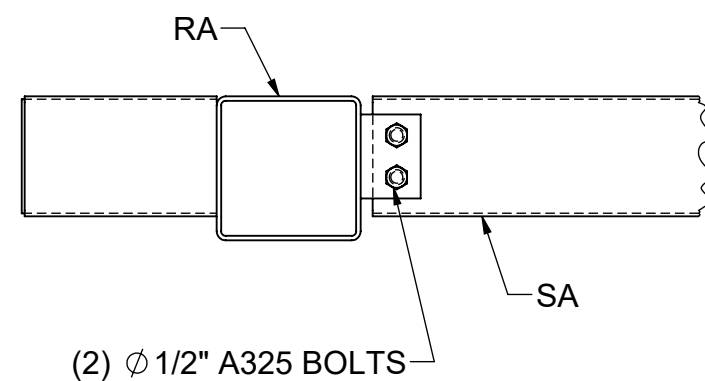
FRAME SECTION AT POST
Scale: 1-1/2" = 1'-0"



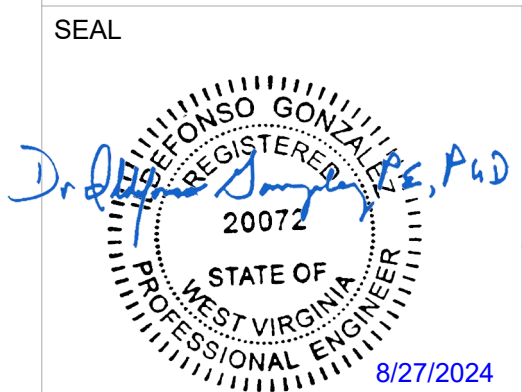
FRAME SECTION AT EDGE BEAM
Scale: 1-1/2" = 1'-0"



FRAME SECTION AT RIDGE
Scale: 1-1/2" = 1'-0"

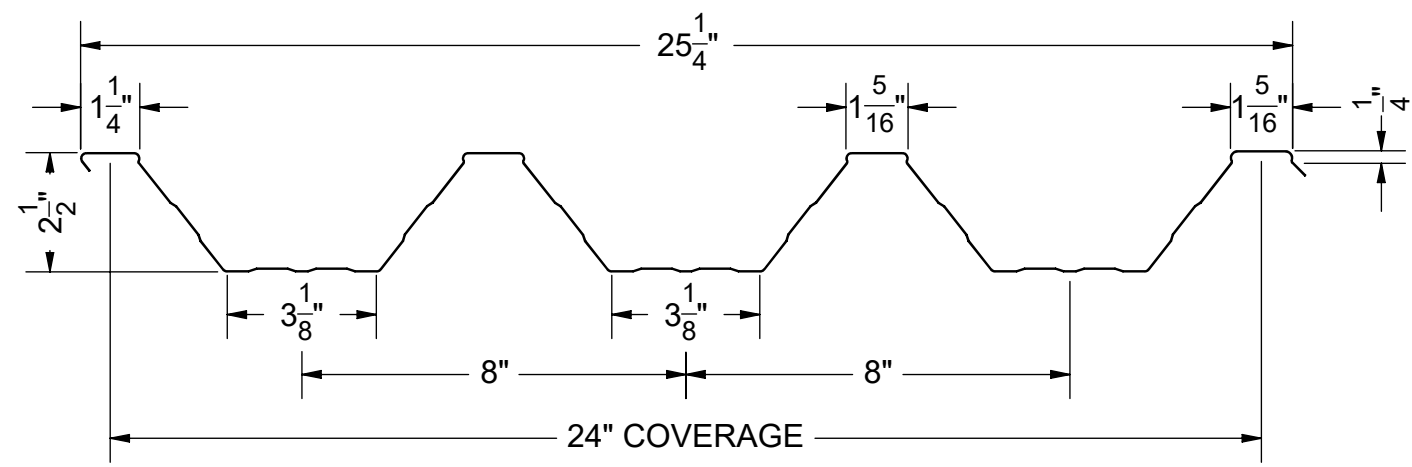


FRAME SECTION AT PURLIN
Scale: 1-1/2" = 1'-0"



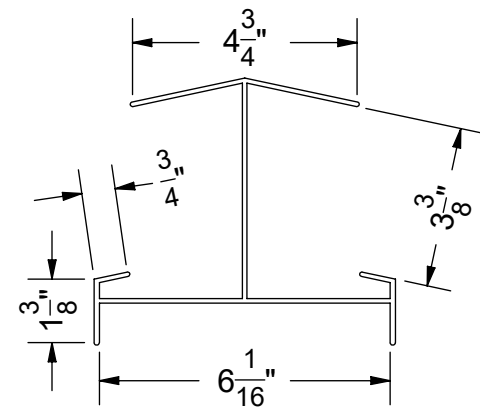
Dr. Al Gonzalez P.E.
DOTec Corp
424 Jefferson Street
St. Charles, MO 63301
PH 636-724-9872
EX 636-724-9032
WWW.DOTECENGINEERING.COM
ALG@DOTECENGINEERING.COM

ENGINEER DOTec ENGINEERING ADDRESS: 424 JEFFERSON STREET ST CHARLES, MO 63301 PHONE: (636) 724-9872 WEB: www.dotecengineering.com	MANUFACTURER AMERICANA OUTDOORS ADDRESS: #2 INDUSTRIAL DRIVE SALEM, IL 62881 PHONE: (800) 851-0865 WEB: www.americana.com	PROJECT / LOCATION 273 WOODBURY AVE. MARTINSBURG, WV 25404	MODEL 24' x 50' ILLINI SHELTER	DWG. NO. 222129	DRAWN BY TG	DRAWN DATE 8/19/2024	SHEET S4 OF 16 SHEETS
				JOB NO. 222129		CHECKED BY	
				P.O. NO. P24-188	AY		



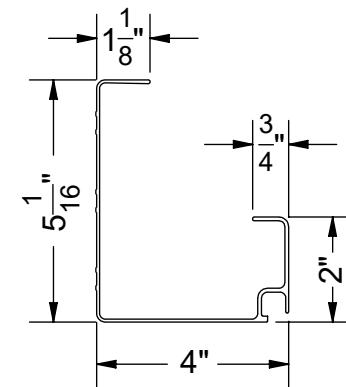
ALUMINUM 3004-H36
THICKNESS= .038"

ROOF DECK PROFILE
Scale: 2" = 1'-0"



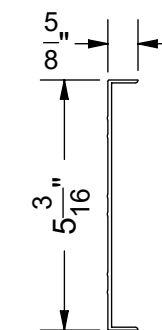
ALUMINUM ALLOY 6105-T5
THICKNESS= .094"

RIDGE TRIM PROFILE
Scale: 3" = 1'-0"



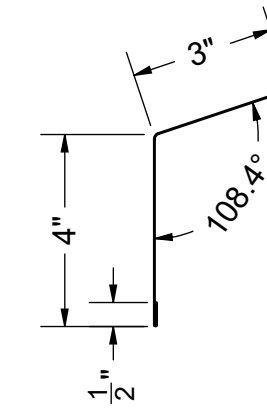
ALUMINUM ALLOY 6105-T5
THICKNESS= .062"

GUTTER PROFILE
Scale: 3" = 1'-0"



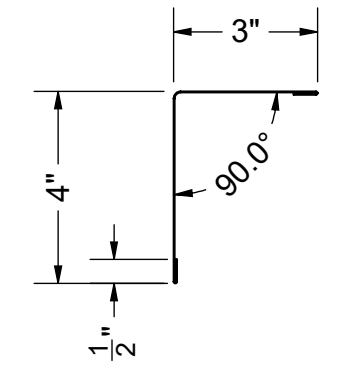
ALUMINUM ALLOY 6061-T6
THICKNESS= .080"

FASCIA PROFILE
Scale: 3" = 1'-0"



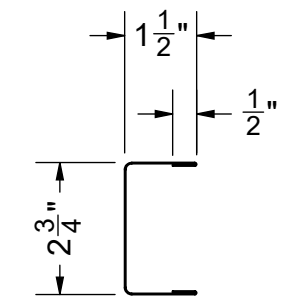
ASTM A792 GALVALUME
THICKNESS= 24 GAUGE

EAVE TRIM PROFILE
Scale: 3" = 1'-0"



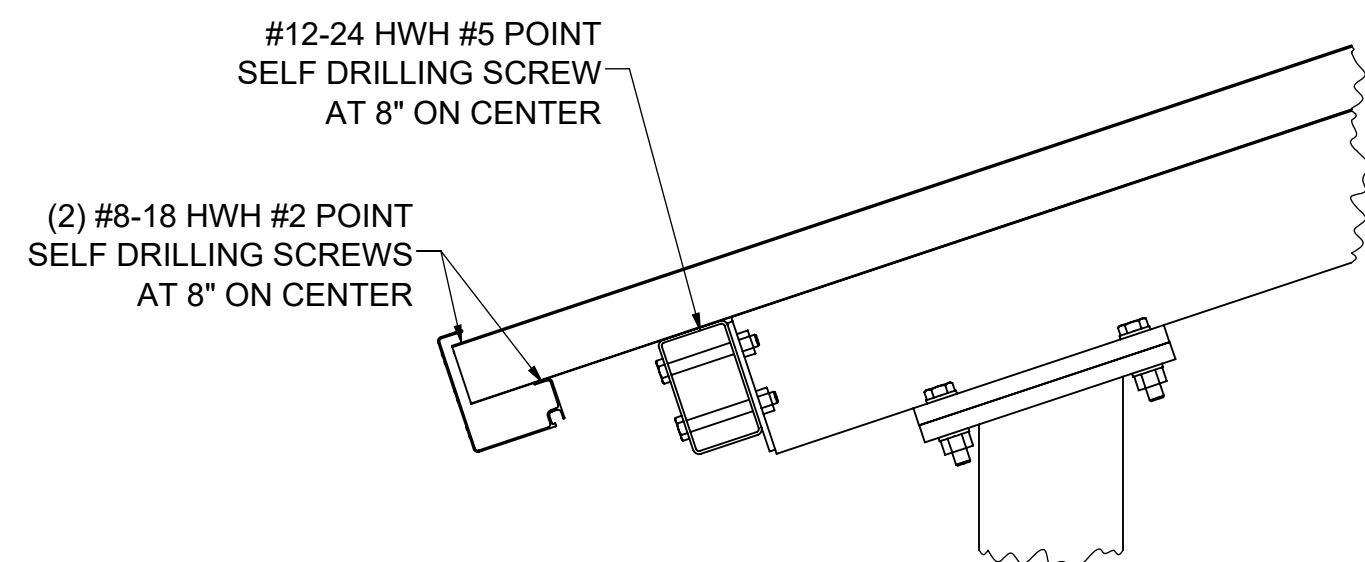
ASTM A792 GALVALUME
THICKNESS= 24 GAUGE

RAKE TRIM PROFILE
Scale: 3" = 1'-0"

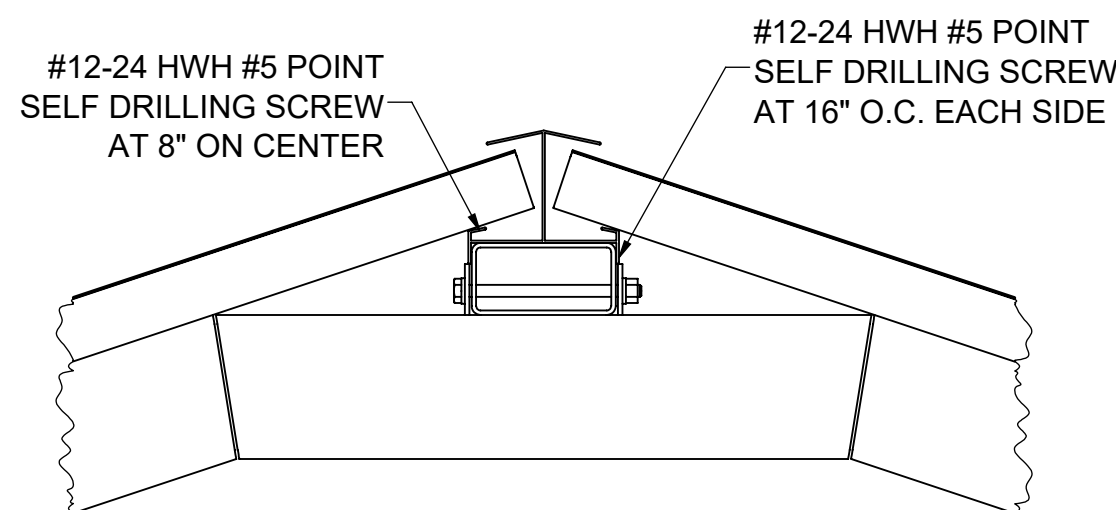


ASTM A792 GALVALUME
THICKNESS= 24 GAUGE

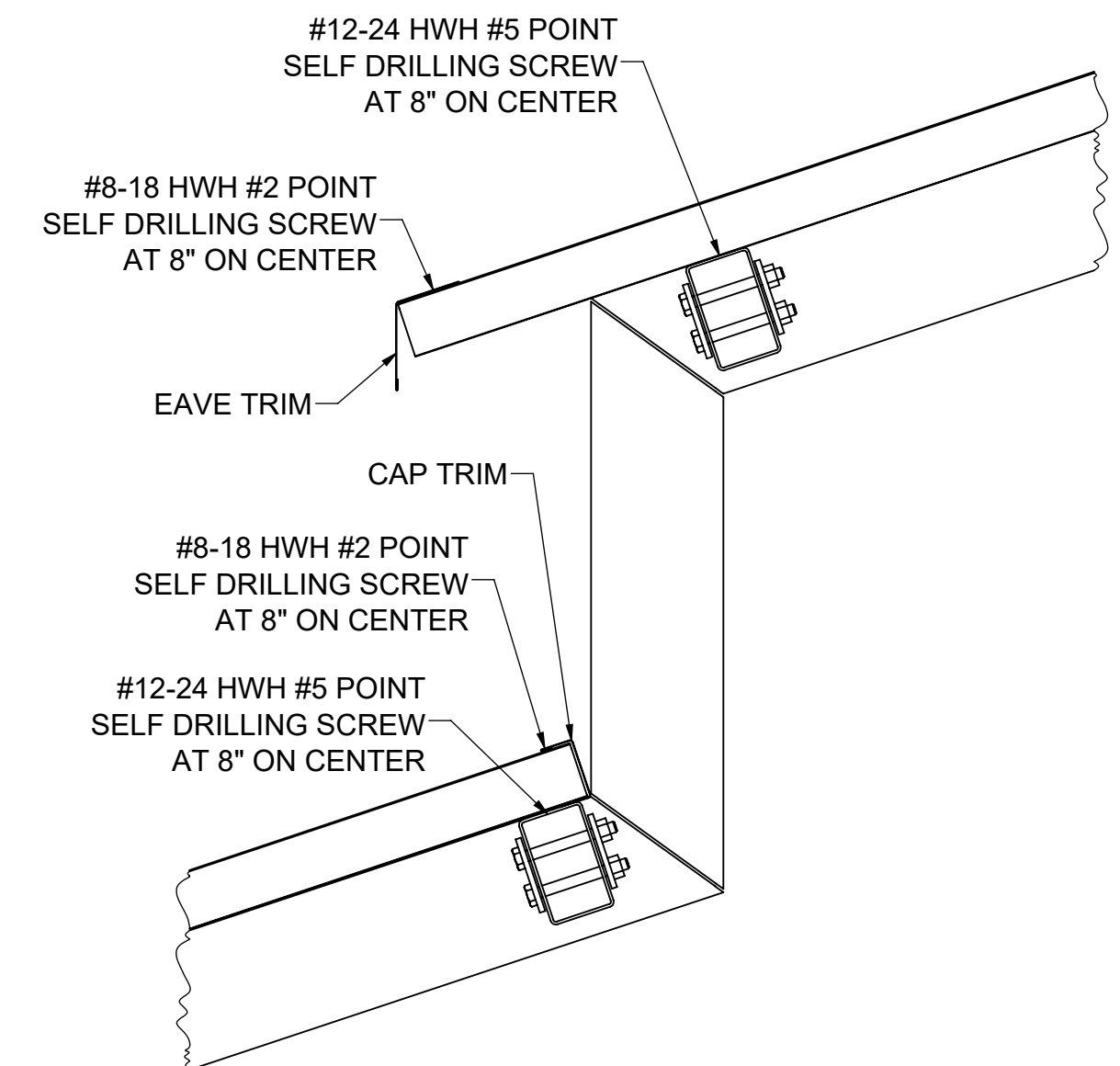
CAP TRIM PROFILE
Scale: 3" = 1'-0"



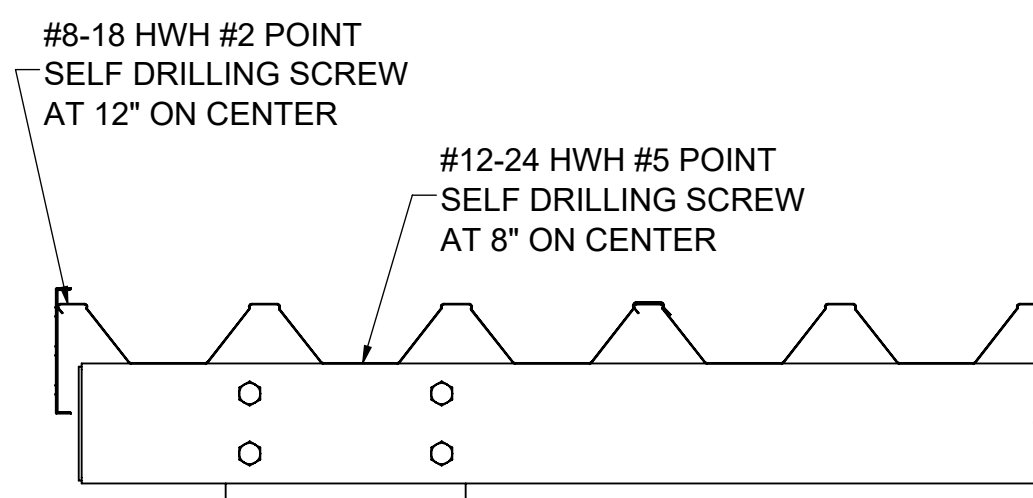
ROOF SECTION AT EAVE
Scale: 1-1/2" = 1'-0"



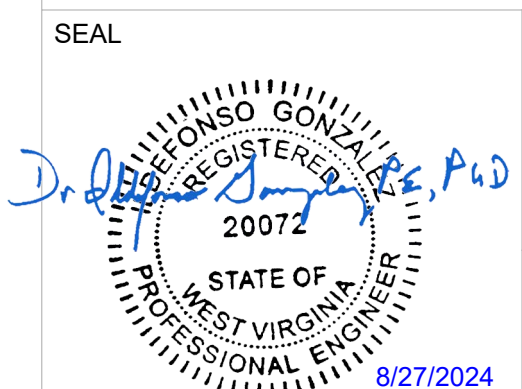
ROOF SECTION AT RIDGE
Scale: 1-1/2" = 1'-0"



ROOF SECTION AT TRANSITION
Scale: 1-1/2" = 1'-0"

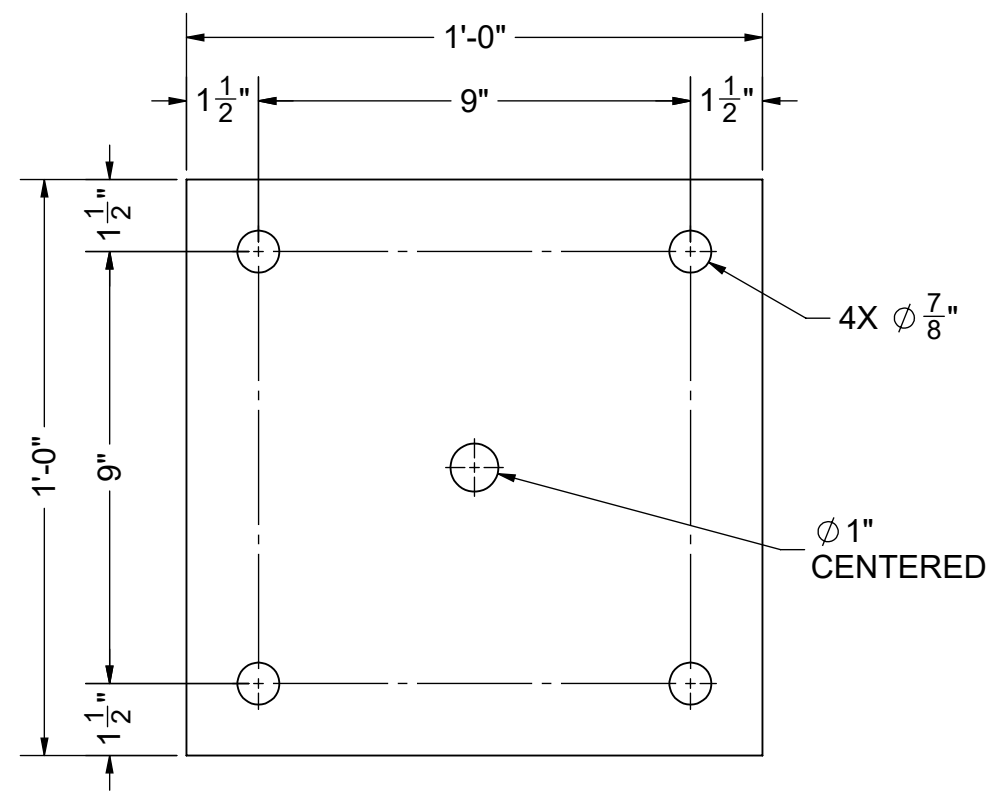


ROOF SECTION AT RAKE
Scale: 1-1/2" = 1'-0"

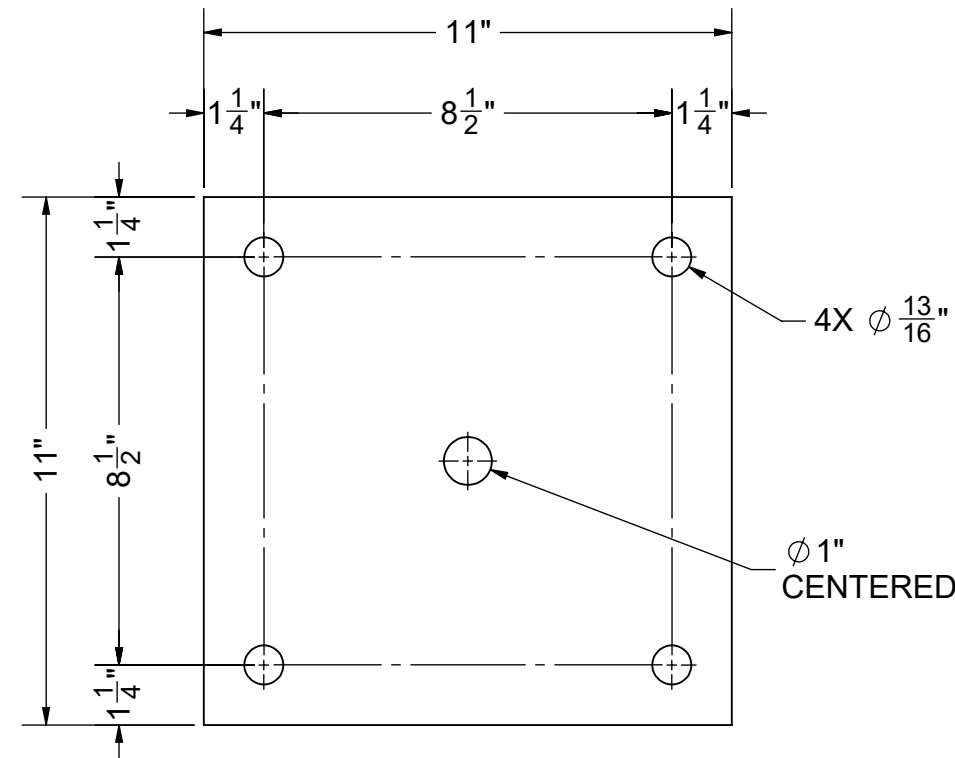


Dr. Al Gonzalez P.E.
DOTec Corp
424 Jefferson Street
St. Charles, MO 63301
PH 636-724-9872
EX 636-724-9032
WWW.DOTENGINEERING.COM
AL@DOTENGINEERING.COM

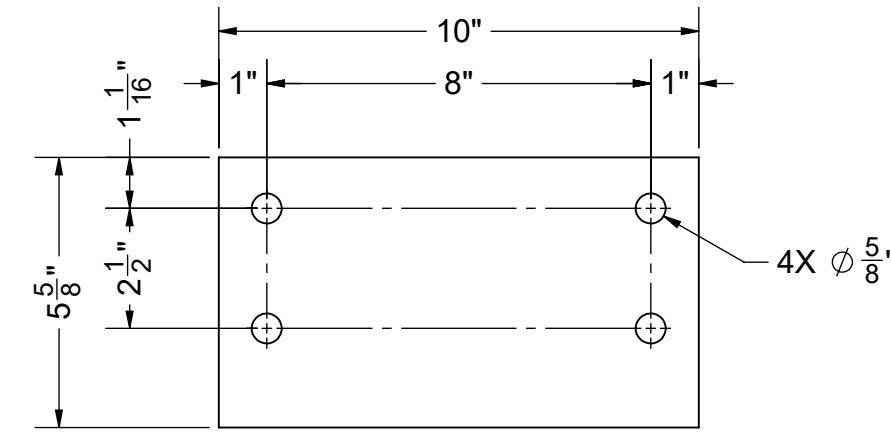
ENGINEER DOTec ENGINEERING ADDRESS: 424 JEFFERSON STREET ST CHARLES, MO 63301 PHONE: (636) 724-9872 WEB: www.dotecengineering.com	MANUFACTURER AMERICANA OUTDOORS ADDRESS: #2 INDUSTRIAL DRIVE SALEM, IL 62881 PHONE: (800) 851-0865 WEB: www.americana.com	PROJECT / LOCATION 273 WOODBURY AVE. MARTINSBURG, WV 25404	MODEL 24' x 50' ILLINI SHELTER	DWG. NO. 222129 JOB NO. 222129 P.O. NO. P24-188	DRAWN BY TG CHECKED BY AY	DRAWN DATE 8/19/2024 REVISE DATE	SHEET S5 OF 16 SHEETS
--	--	--	--	---	------------------------------	-------------------------------------	--------------------------



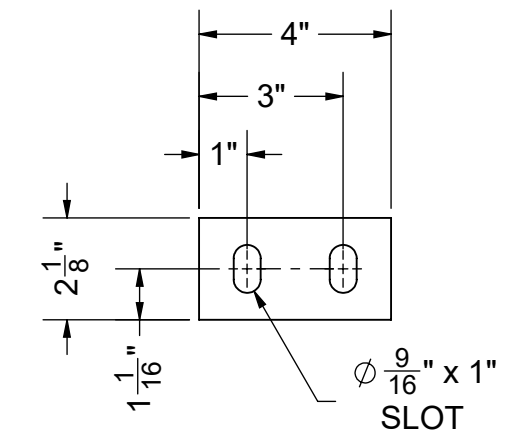
1" PLATE
(10) BASE PLATE - Pa



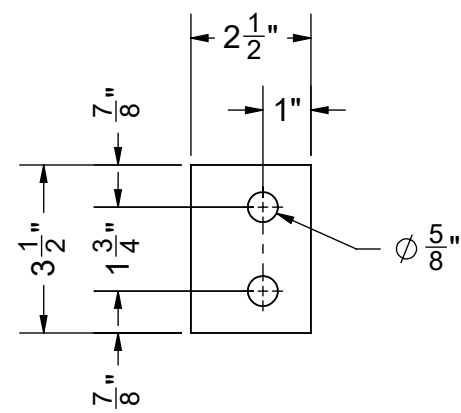
3/4" PLATE
(20) POST PLATE - Pb



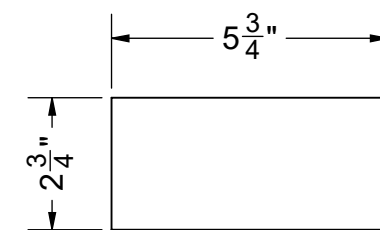
1/4" PLATE
(10) BEAM MOUNT - Ra



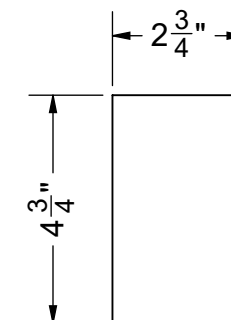
3/16" PLATE
(10) BEAM MOUNT - RP8



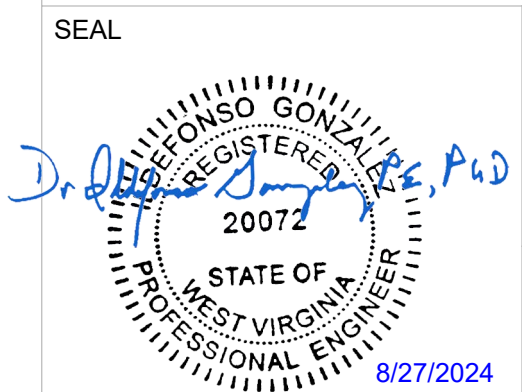
1/4" PLATE
(64) PURLIN MOUNT - PM5



1/8" PLATE
(2) CAP PLATE - PL1



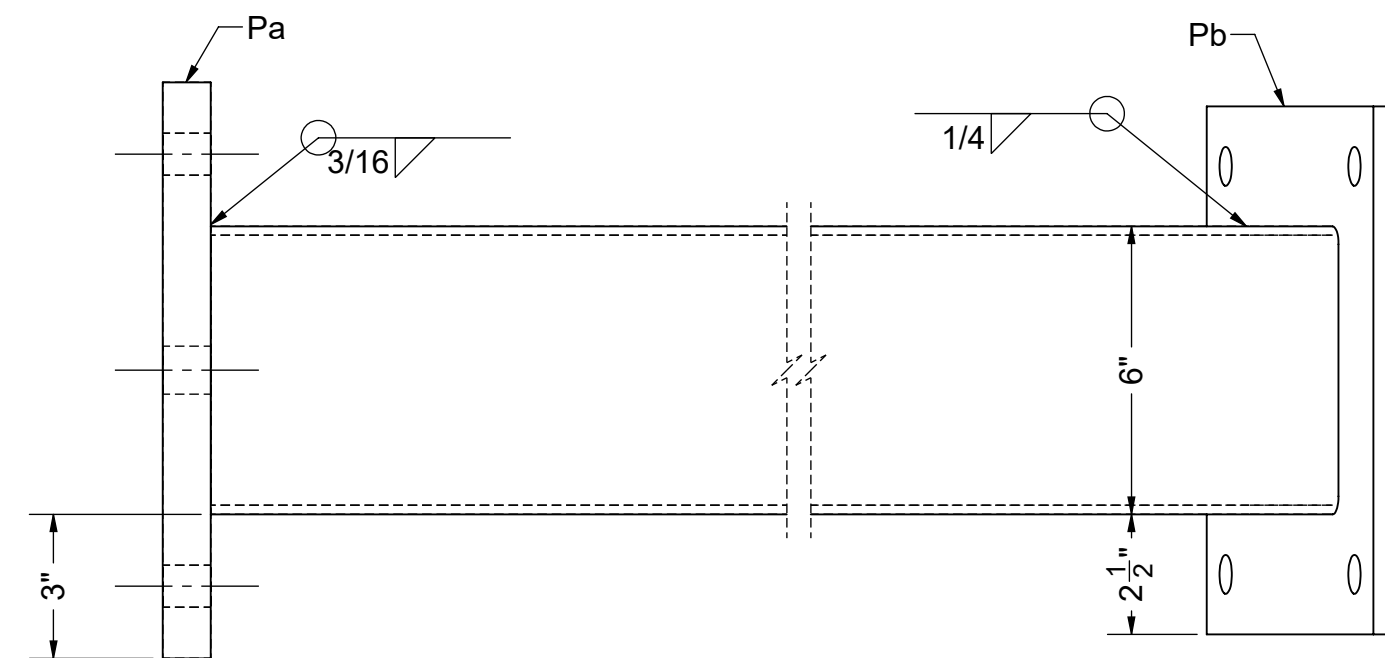
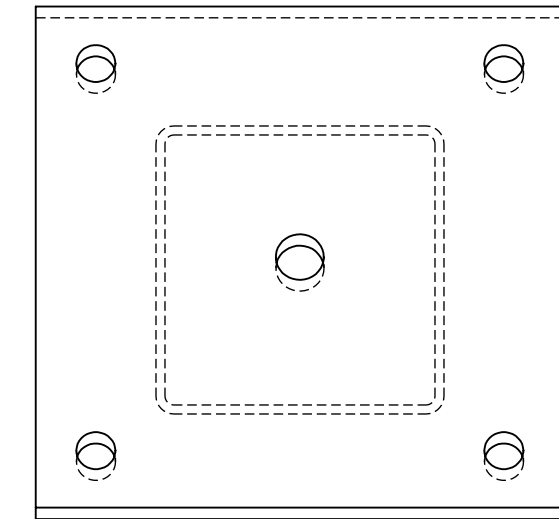
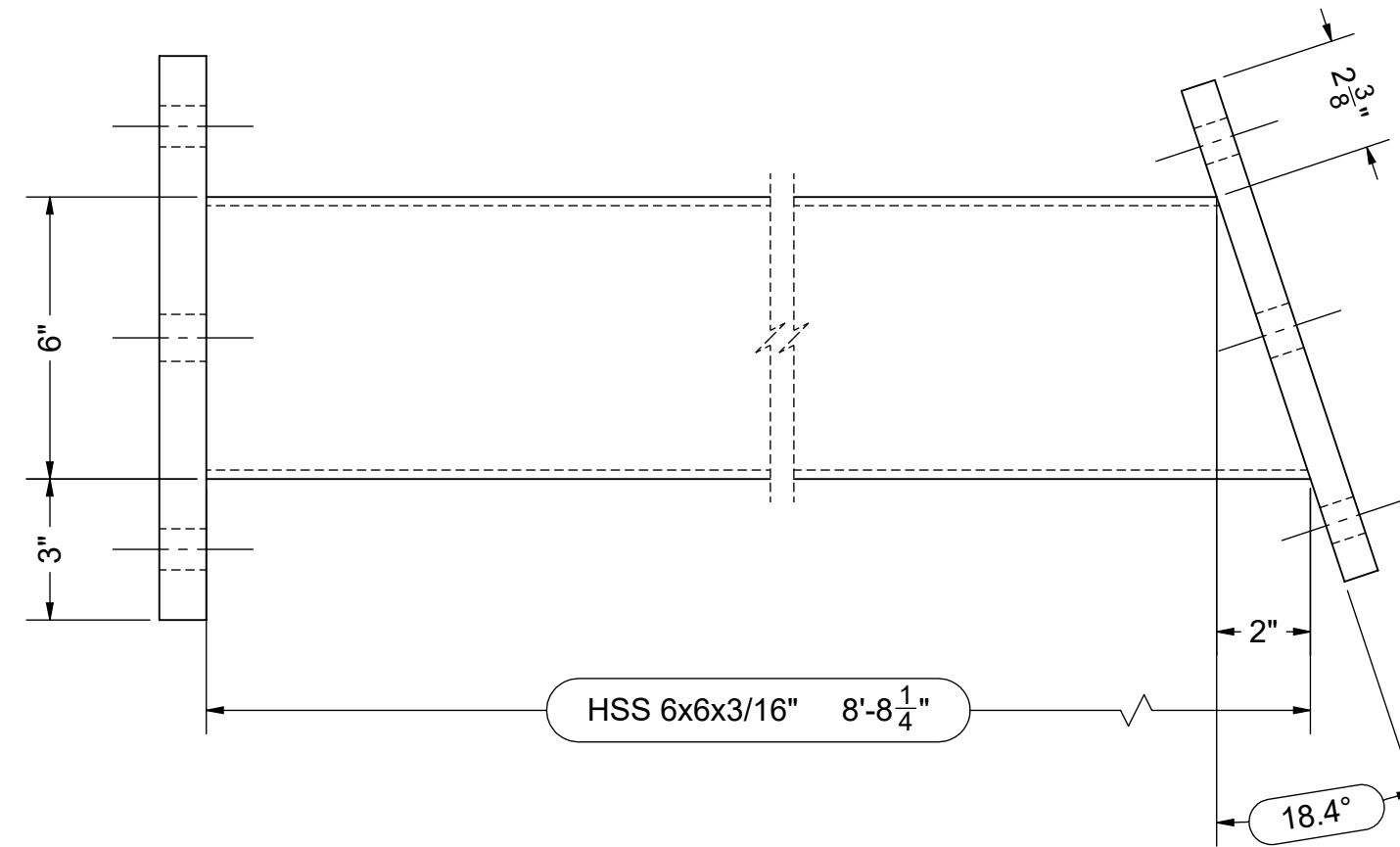
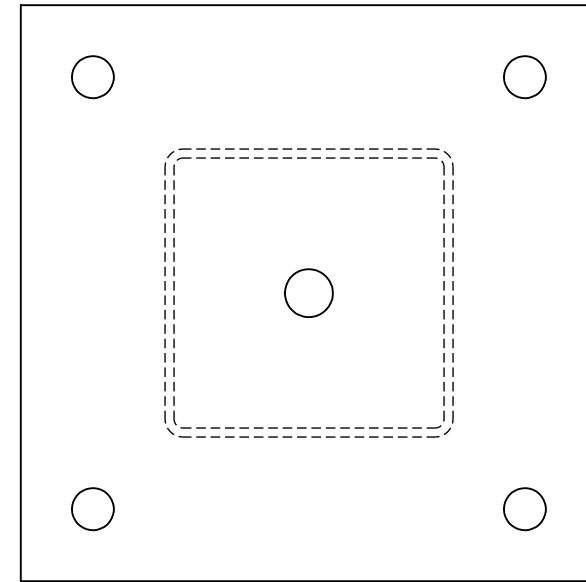
1/8" PLATE
(12) CAP PLATE - PL12



Dr. Alfonso Gonzalez P.E.
DOTec Corp
424 Jefferson Street
St. Charles, MO 63301
PH 636-724-9872
EX 636-724-9032
WWW.DOTECENGINEERING.COM
ALG@DOTECENGINEERING.COM

ENGINEER	MANUFACTURER	PROJECT / LOCATION	MODEL	DWG. NO.	DRAWN BY	DRAWN DATE	SHEET
DOTec ENGINEERING ADDRESS: 424 JEFFERSON STREET ST CHARLES, MO 63301 PHONE: (636) 724-9872 WEB: www.dotecengineering.com	AMERICANA OUTDOORS ADDRESS: #2 INDUSTRIAL DRIVE SALEM, IL 62881 PHONE: (800) 851-0865 WEB: www.americana.com	273 WOODBURY AVE. MARTINSBURG, WV 25404	24' x 50' ILLINI SHELTER	222129	TG	8/19/2024	D1
				JOB NO.	CHECKED BY	REVISE DATE	
				222129	AY		
				P.O. NO.			OF 16 SHEETS
				P24-188			

PART QTY SHOWN IS FOR (1) SHELTER



(10) POST - PA

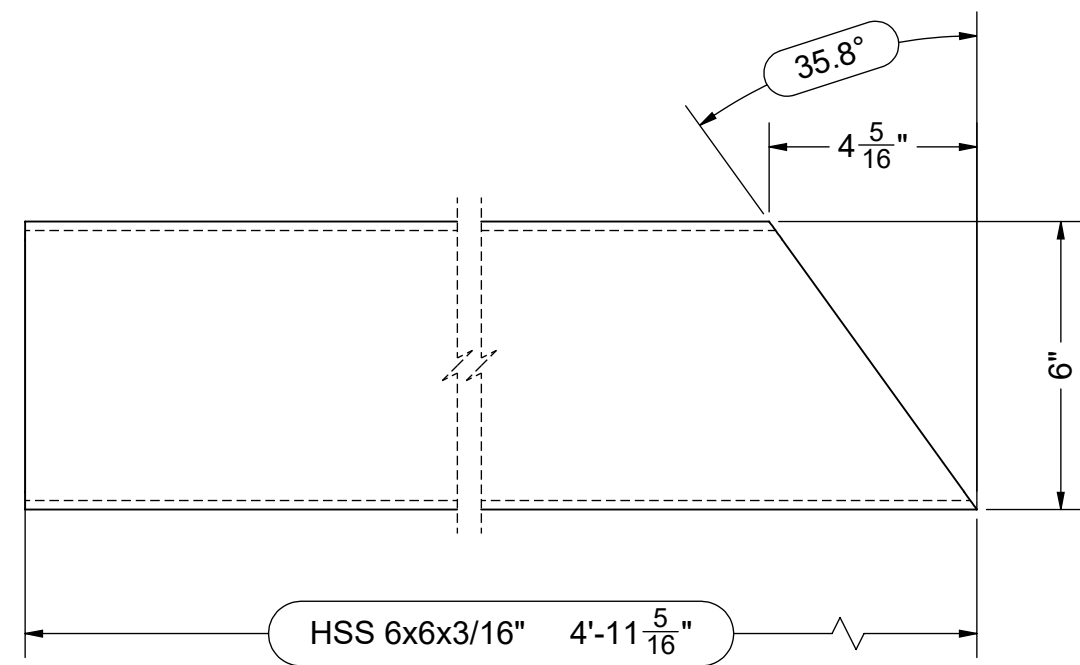
PART QTY SHOWN IS FOR (1) SHELTER

SEAL

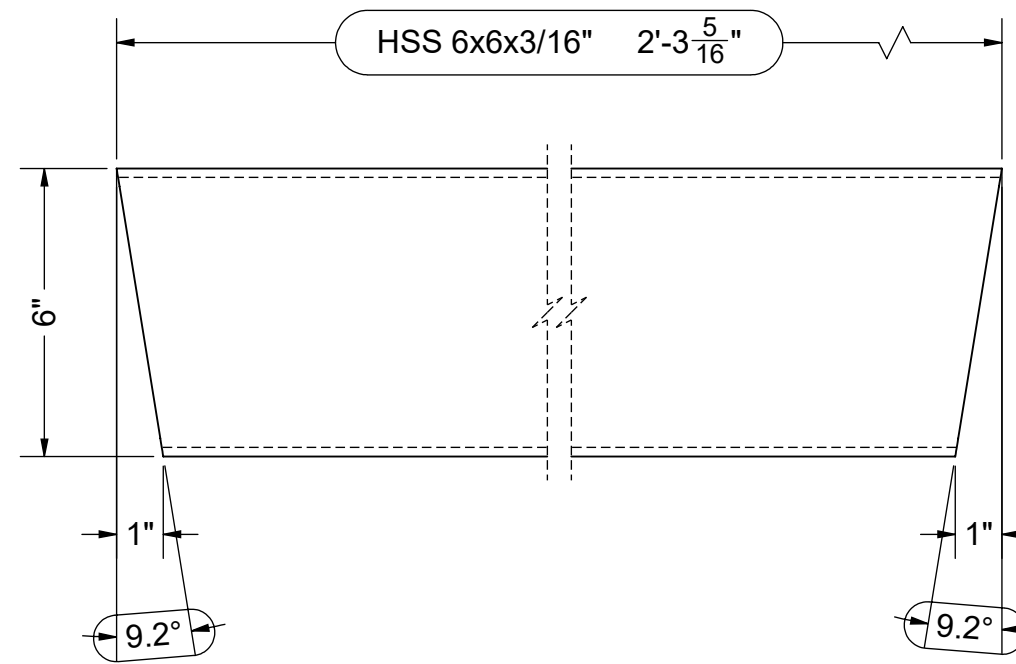


Dr. Al Gonzalez P.E.
 DOTec Corp
 424 Jefferson Street
 St. Charles, MO 63301
 PH 636-724-9872
 FX 636-724-9032
 WWW.DOTECENGINEERING.COM
 ALG@DOTECENGINEERING.COM

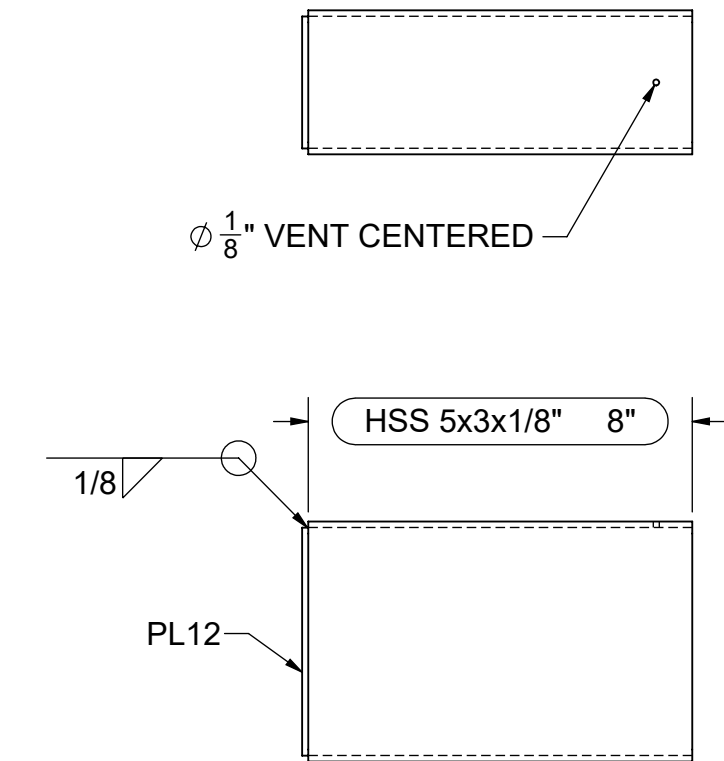
ENGINEER	MANUFACTURER	PROJECT / LOCATION	MODEL	DWG. NO.	DRAWN BY	DRAWN DATE	SHEET
DOTec ENGINEERING ADDRESS: 424 JEFFERSON STREET ST CHARLES, MO 63301 PHONE: (636) 724-9872 WEB: www.dotecengineering.com	AMERICANA OUTDOORS ADDRESS: #2 INDUSTRIAL DRIVE SALEM, IL 62881 PHONE: (800) 851-0865 WEB: www.americana.com	273 WOODBURY AVE. MARTINSBURG, WV 25404	24' x 50' ILLINI SHELTER	222129	TG	8/19/2024	D2
				JOB NO.	CHECKED BY	REVISE DATE	
				222129	AY		OF 16 SHEETS
				P.O. NO.			
				P24-188			



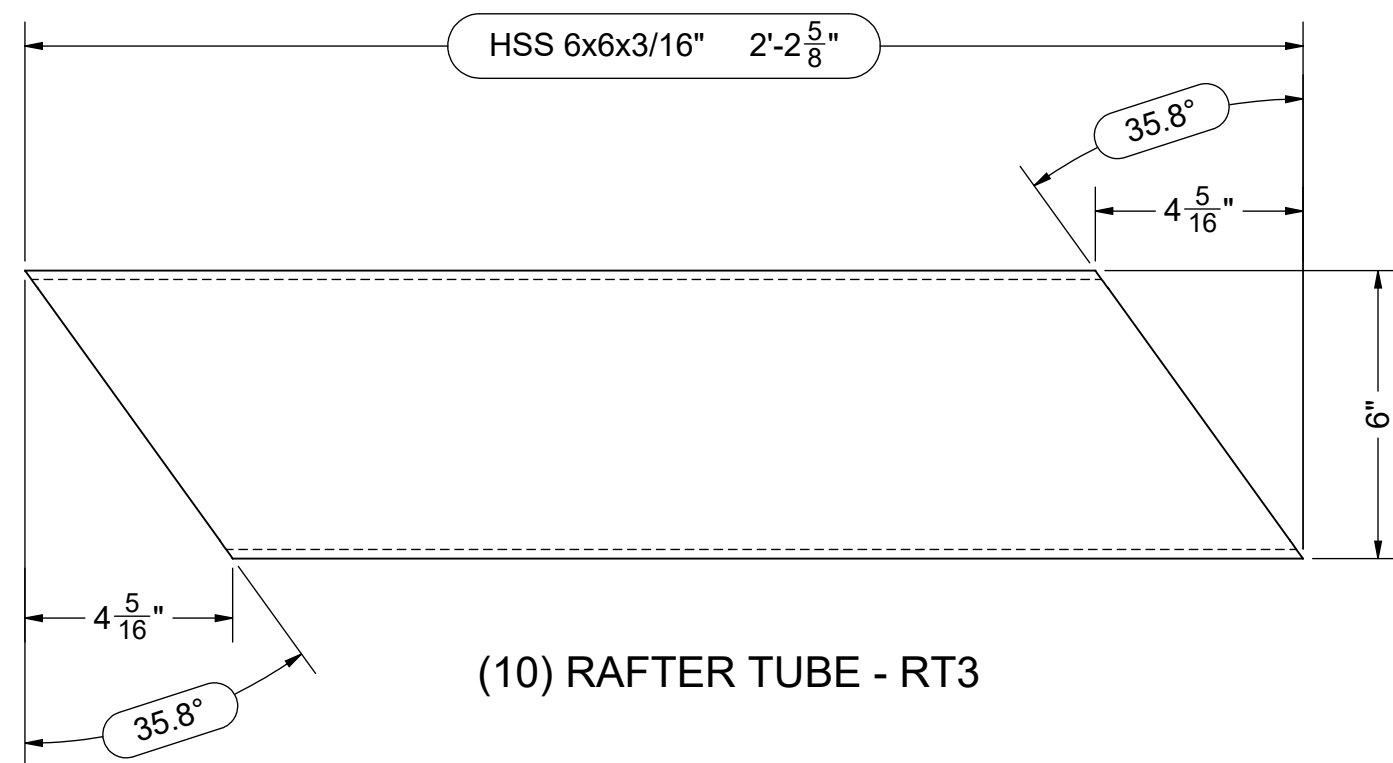
(10) RAFTER TUBE - RT1



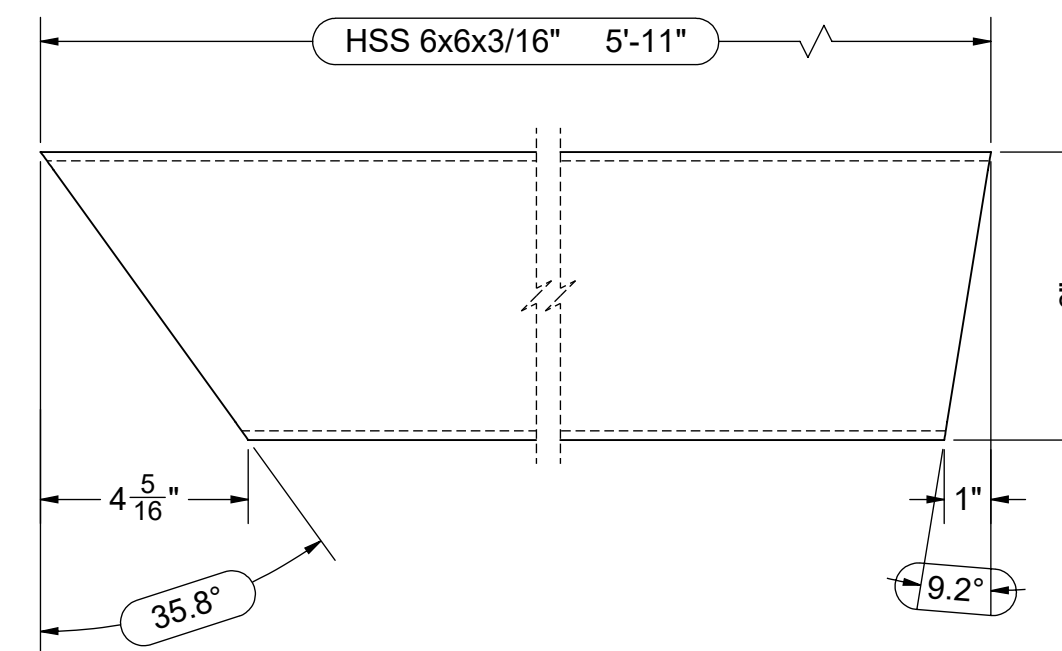
(5) RAFTER TUBE - RT2



(8) PURLIN - SB

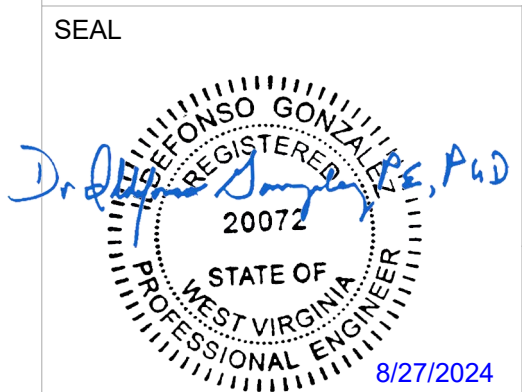


(10) RAFTER TUBE - RT3



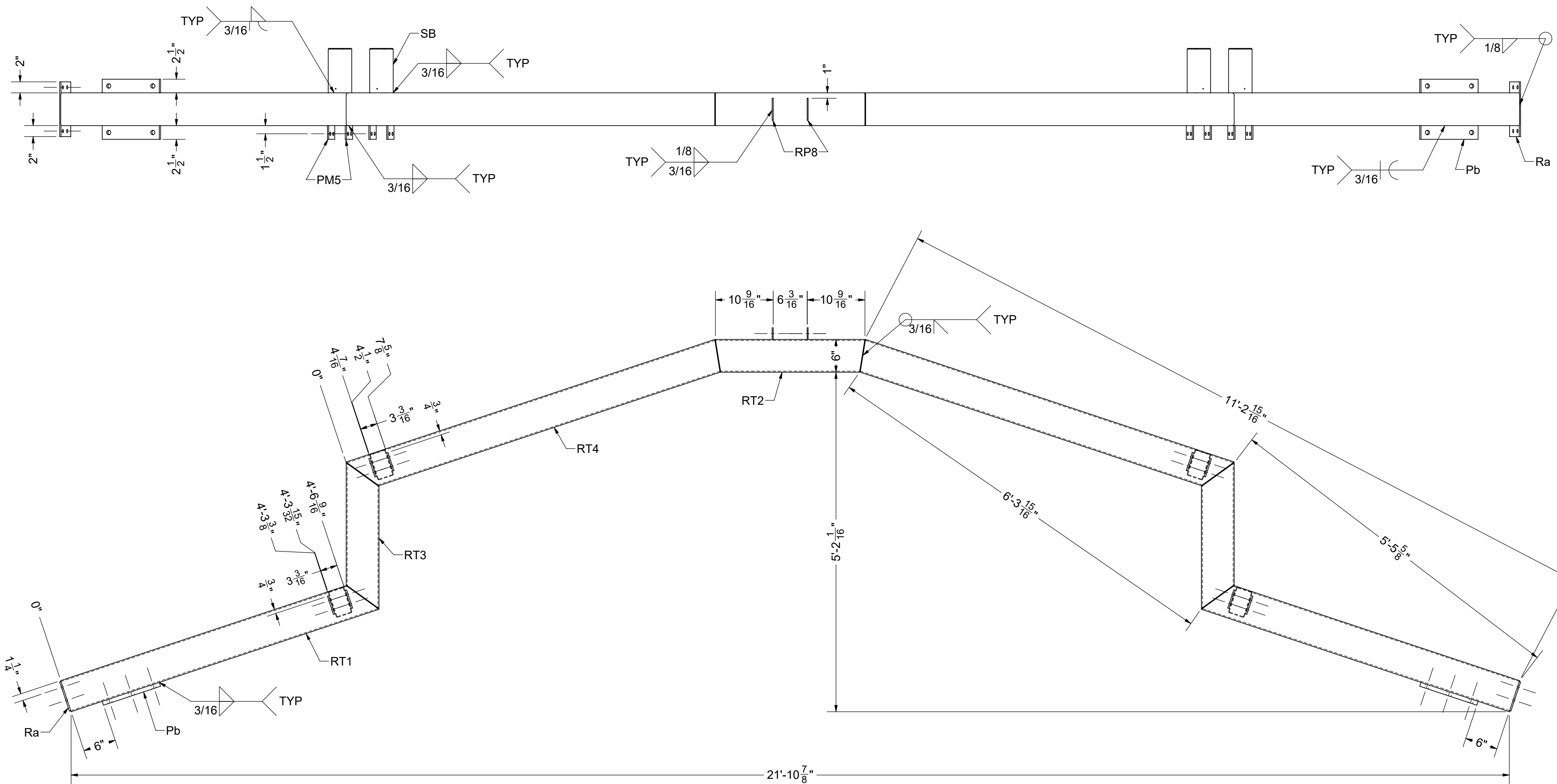
(10) RAFTER TUBE - RT4

PART QTY SHOWN IS FOR (1) SHELTER



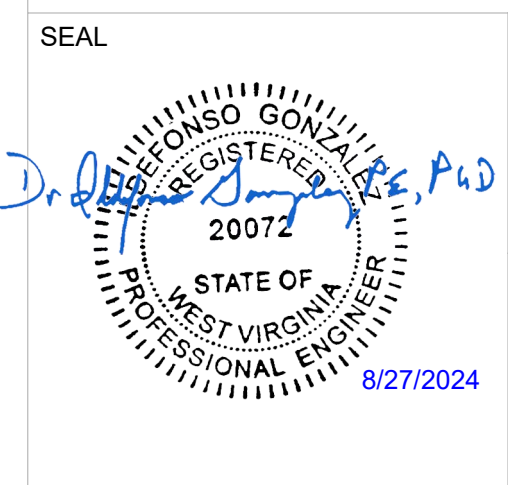
Dr. Al Gonzalez P.E.
 DOTec Corp
 424 Jefferson Street
 St. Charles, MO 63301
 PH 636-724-9872
 FX 636-724-9032
 WWW.DOTECENGINEERING.COM
 AL@DOTECENGINEERING.COM

ENGINEER	MANUFACTURER	PROJECT / LOCATION	MODEL	DWG. NO.	DRAWN BY	DRAWN DATE	SHEET
DOTec ENGINEERING ADDRESS: 424 JEFFERSON STREET ST CHARLES, MO 63301 PHONE: (636) 724-9872 WEB: www.dotecengineering.com	AMERICANA OUTDOORS ADDRESS: #2 INDUSTRIAL DRIVE SALEM, IL 62881 PHONE: (800) 851-0865 WEB: www.americana.com	273 WOODBURY AVE. MARTINSBURG, WV 25404	24' x 50' ILLINI SHELTER	222129 222129 P24-188	TG AY	8/19/2024 REVISE DATE	D3 OF 16 SHEETS



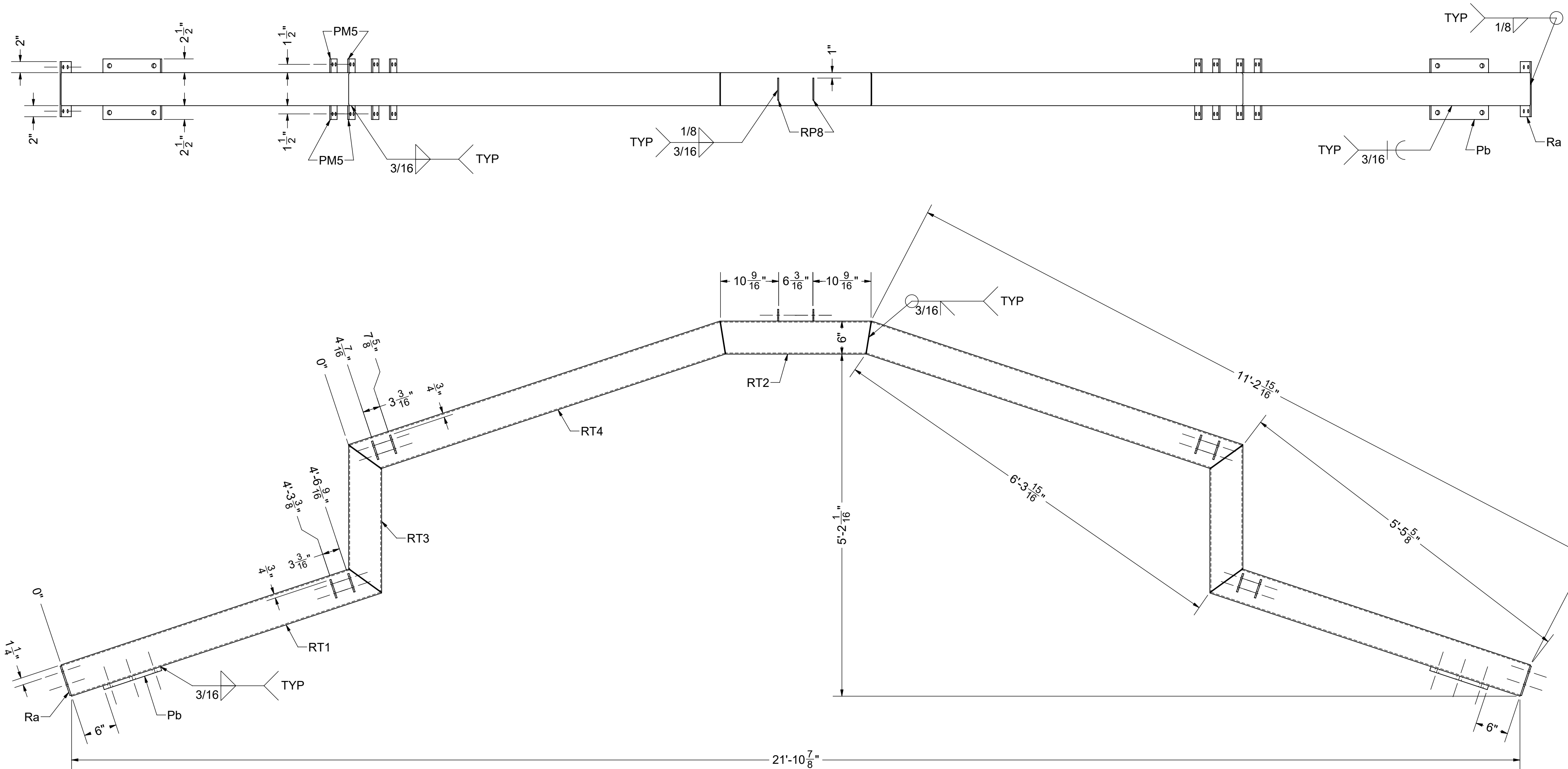
(2) RAFTER - RA

PART QTY SHOWN IS FOR (1) SHELTER



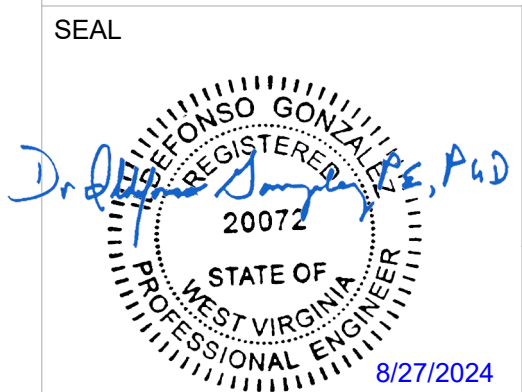
Dr. Alfonso Gonzalez P.E.
 DOTec Corp
 424 Jefferson Street
 St. Charles, MO 63301
 PH 636-724-9872
 FX 636-724-9032
 WWW.DOTECENGINEERING.COM
 ALG@DOTECENGINEERING.COM

ENGINEER DOTec ENGINEERING ADDRESS: 424 JEFFERSON STREET ST CHARLES, MO 63301 PHONE: (636) 724-9872 WEB: www.dotecengineering.com	MANUFACTURER AMERICANA OUTDOORS ADDRESS: #2 INDUSTRIAL DRIVE SALEM, IL 62881 PHONE: (800) 851-0865 WEB: www.americana.com	PROJECT / LOCATION 273 WOODBURY AVE. MARTINSBURG, WV 25404	MODEL 24' x 50' ILLINI SHELTER	DWG. NO.	222129	DRAWN BY	TG	DRAWN DATE	8/19/2024	SHEET D4 OF 16 SHEETS
				JOB NO.	222129	CHECKED BY	AY	REVISE DATE		
				P.O. NO.	P24-188					



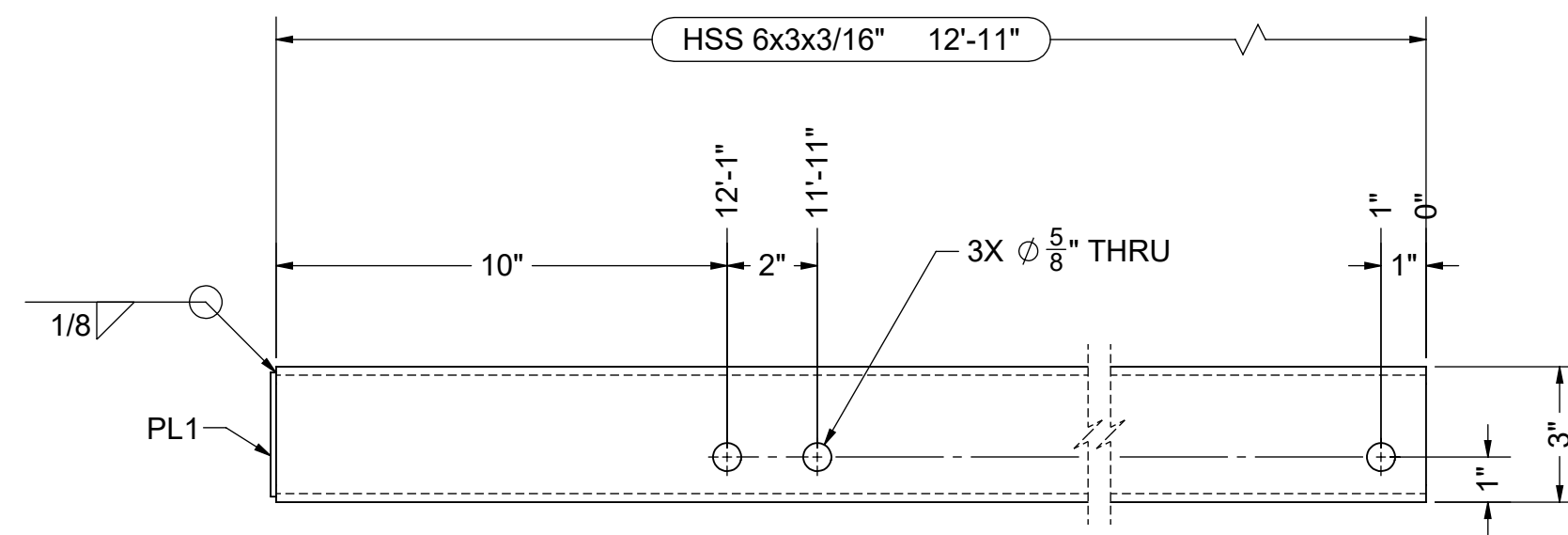
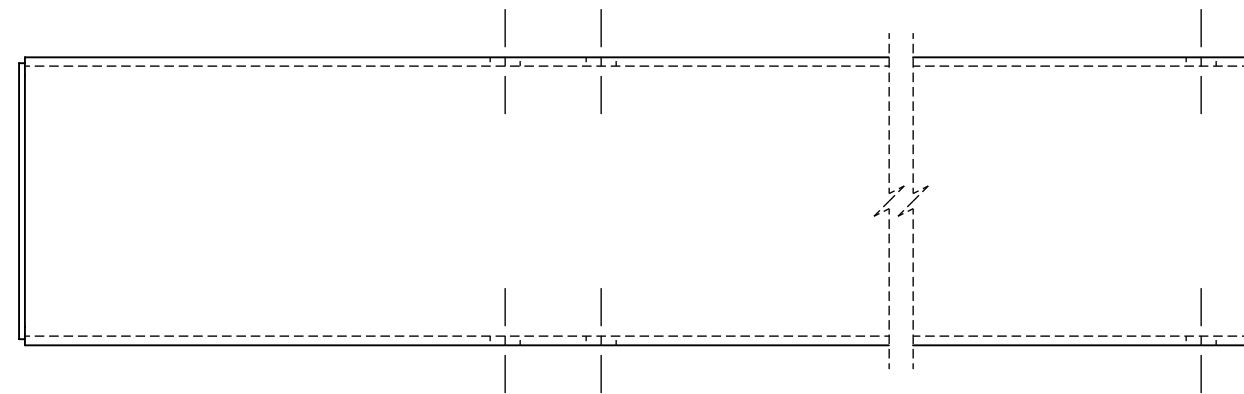
(3) RAFTER - RB

PART QTY SHOWN IS FOR (1) SHELTER



Dr. Al Gonzalez P.E.
 DOTec Corp
 424 Jefferson Street
 St. Charles, MO 63301
 PH 636-724-9872
 FX 636-724-9032
 WWW.DOTECENGINEERING.COM
 ALG@DOTECENGINEERING.COM

ENGINEER DOTec ENGINEERING ADDRESS: 424 JEFFERSON STREET ST CHARLES, MO 63301 PHONE: (636) 724-9872 WEB: www.dotecengineering.com	MANUFACTURER AMERICANA OUTDOORS ADDRESS: #2 INDUSTRIAL DRIVE SALEM, IL 62881 PHONE: (800) 851-0865 WEB: www.americana.com	PROJECT / LOCATION 273 WOODBURY AVE. MARTINSBURG, WV 25404	MODEL 24' x 50' ILLINI SHELTER	DWG. NO.	222129	DRAWN BY TG	DRAWN DATE 8/19/2024	SHEET D5 OF 16 SHEETS
				JOB NO.	222129			
				P.O. NO.	P24-188	REVISION DATE		



(2) RIDGE BEAM - TA

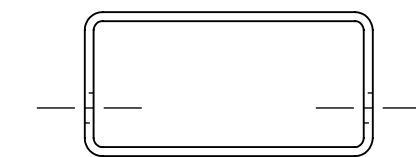
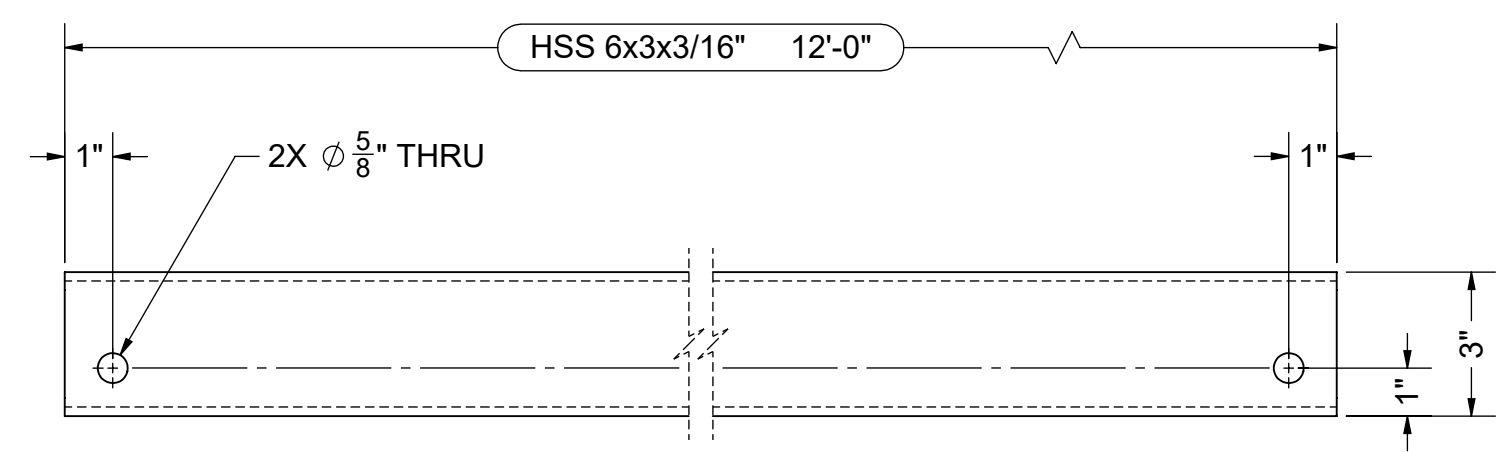
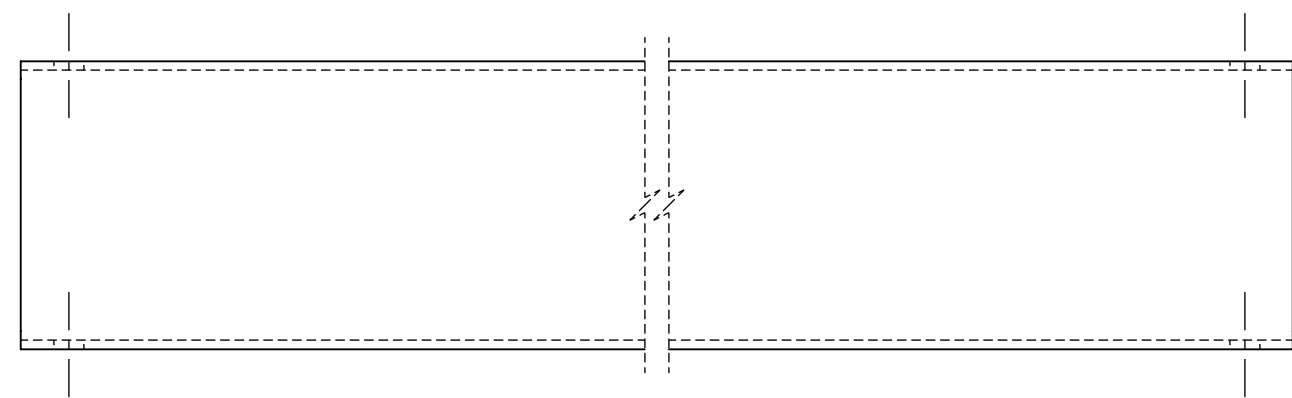
PART QTY SHOWN IS FOR (1) SHELTER

SEAL



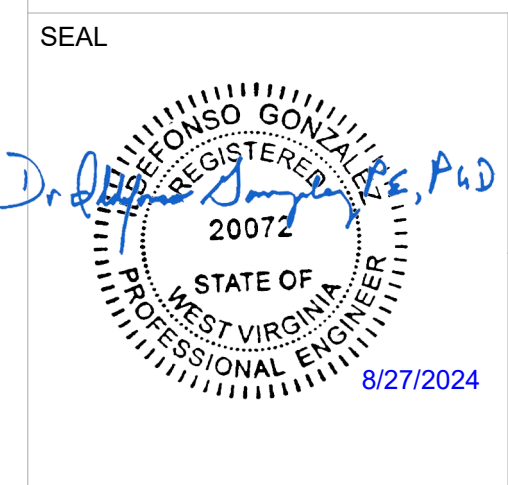
Dr. Alfonso Gonzalez P.E.
 DOTec Corp
 424 Jefferson Street
 St. Charles, MO 63301
 PH 636-724-9872
 FX 636-724-9032
 WWW.DOTECENGINEERING.COM
 ALG@DOTECENGINEERING.COM

ENGINEER DOTec ENGINEERING ADDRESS: 424 JEFFERSON STREET ST CHARLES, MO 63301 PHONE: (636) 724-9872 WEB: www.dotecengineering.com	MANUFACTURER AMERICANA OUTDOORS ADDRESS: #2 INDUSTRIAL DRIVE SALEM, IL 62881 PHONE: (800) 851-0865 WEB: www.americana.com	PROJECT / LOCATION 273 WOODBURY AVE. MARTINSBURG, WV 25404	MODEL 24' x 50' ILLINI SHELTER	DWG. NO.	222129	DRAWN BY	TG	DRAWN DATE	8/19/2024	SHEET D6 OF 16 SHEETS
				JOB NO.	222129	CHECKED BY	AY	REVISE DATE		
				P.O. NO.	P24-188					



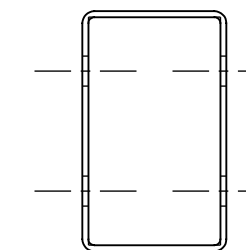
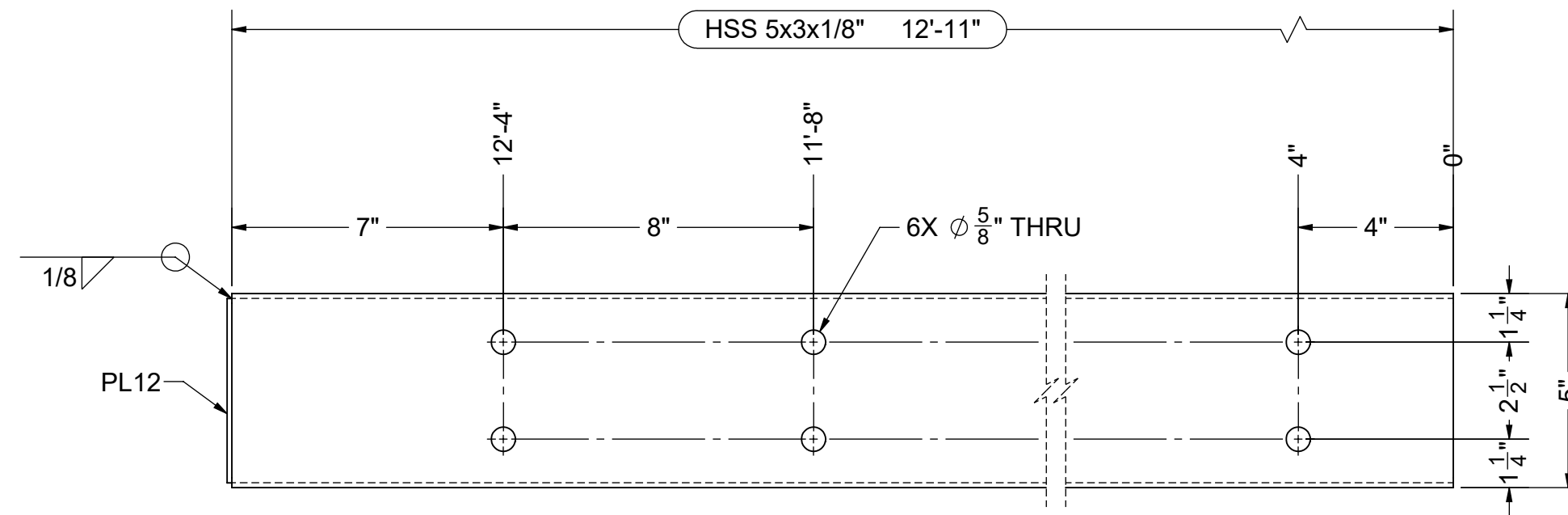
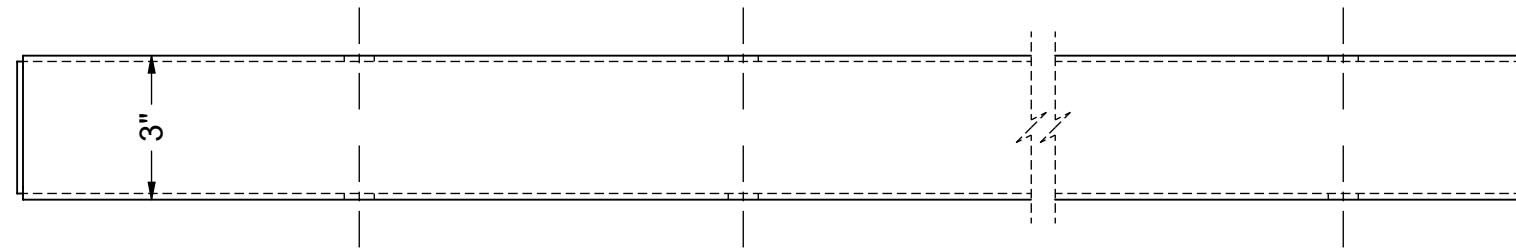
(2) RIDGE BEAM - TB

PART QTY SHOWN IS FOR (1) SHELTER



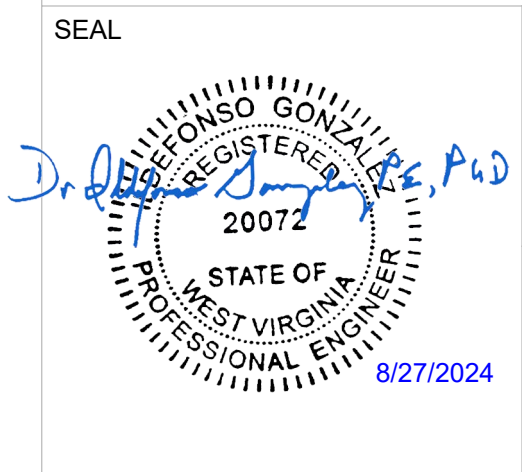
Dr. Alfonso Gonzalez P.E.
 DOTec Corp
 424 Jefferson Street
 St. Charles, MO 63301
 PH 636-724-9872
 FX 636-724-9032
 WWW.DOTECENGINEERING.COM
 ALG@DOTECENGINEERING.COM

ENGINEER DOTec ENGINEERING ADDRESS: 424 JEFFERSON STREET ST CHARLES, MO 63301 PHONE: (636) 724-9872 WEB: www.dotecengineering.com	MANUFACTURER AMERICANA OUTDOORS ADDRESS: #2 INDUSTRIAL DRIVE SALEM, IL 62881 PHONE: (800) 851-0865 WEB: www.americana.com	PROJECT / LOCATION 273 WOODBURY AVE. MARTINSBURG, WV 25404	MODEL 24' x 50' ILLINI SHELTER	DWG. NO. 222129	DRAWN BY TG	DRAWN DATE 8/19/2024	SHEET D7 OF 16 SHEETS
				JOB NO. 222129		CHECKED BY AY	
				P.O. NO. P24-188			



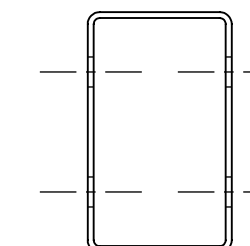
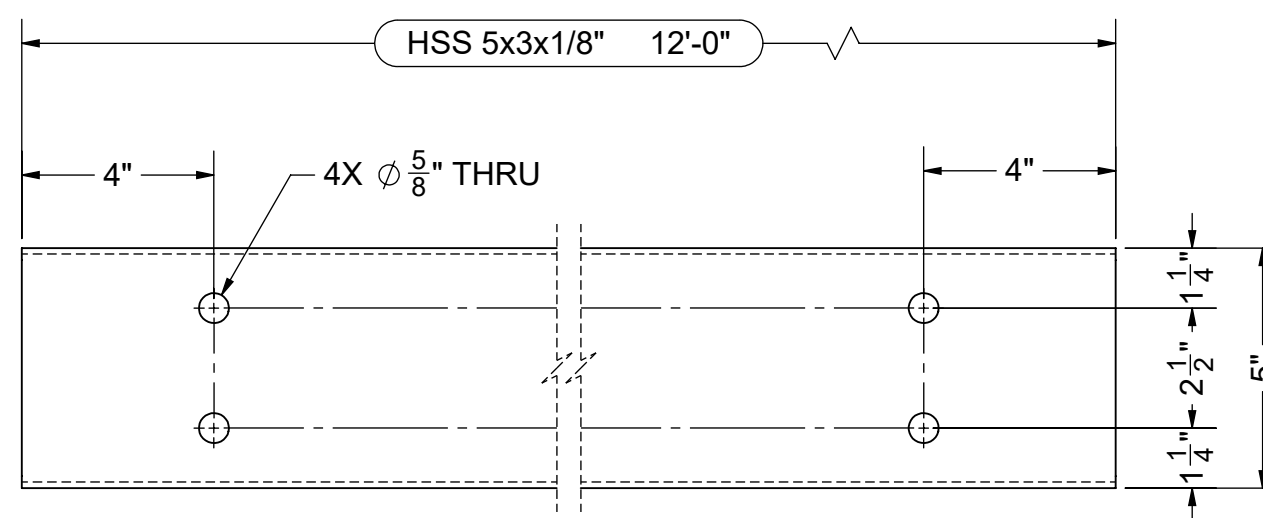
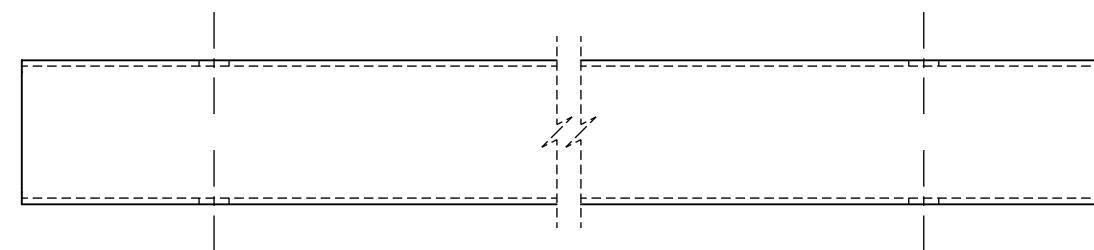
(4) EDGE BEAM - EA

PART QTY SHOWN IS FOR (1) SHELTER



Dr. Alfonso Gonzalez P.E.
 DOTec Corp
 424 Jefferson Street
 St. Charles, MO 63301
 PH 636-724-9872
 FX 636-724-9032
 WWW.DOTECENGINEERING.COM
 ALG@DOTECENGINEERING.COM

ENGINEER DOTec ENGINEERING ADDRESS: 424 JEFFERSON STREET ST CHARLES, MO 63301 PHONE: (636) 724-9872 WEB: www.dotecengineering.com	MANUFACTURER AMERICANA OUTDOORS ADDRESS: #2 INDUSTRIAL DRIVE SALEM, IL 62881 PHONE: (800) 851-0865 WEB: www.americana.com	PROJECT / LOCATION 273 WOODBURY AVE. MARTINSBURG, WV 25404	MODEL 24' x 50' ILLINI SHELTER	DWG. NO.	222129	DRAWN BY TG	DRAWN DATE	8/19/2024	SHEET D8 OF 16 SHEETS
				JOB NO.	222129		CHECKED BY	AY	
				P.O. NO.	P24-188	REVISION DATE			



(4) EDGE BEAM - EB

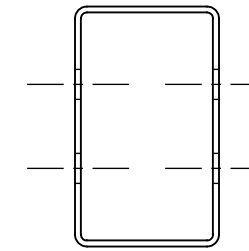
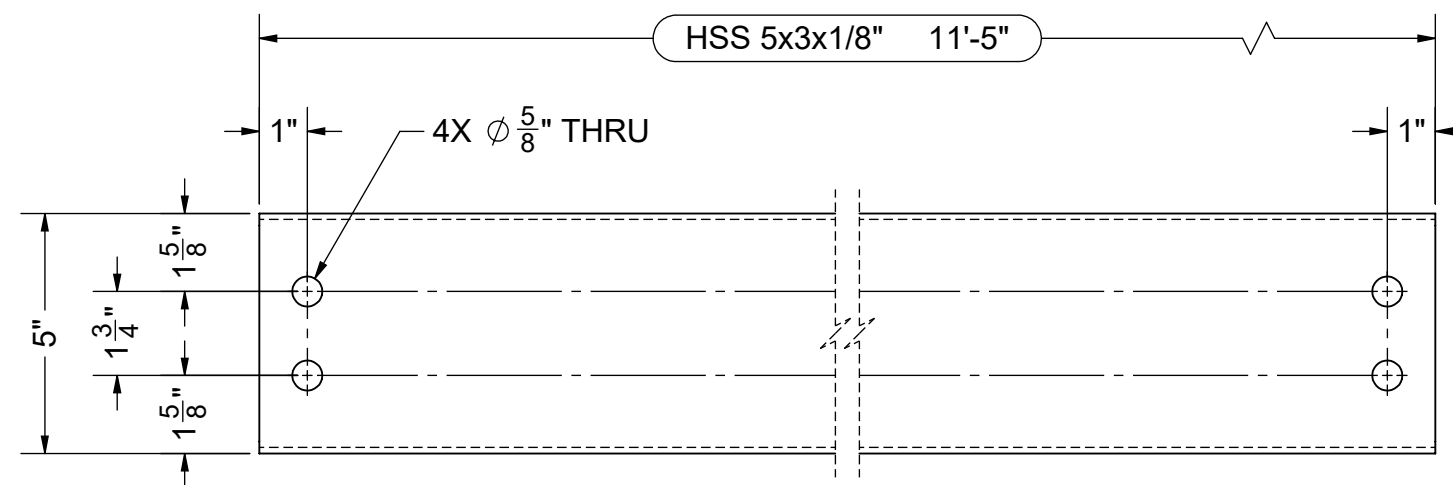
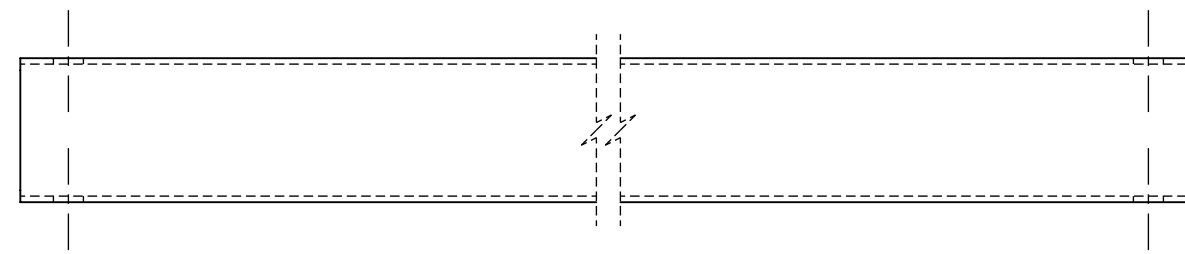
PART QTY SHOWN IS FOR (1) SHELTER

SEAL



Dr. Al Gonzalez P.E.
 DOTec Corp
 424 Jefferson Street
 St. Charles, MO 63301
 PH 636-724-9872
 FX 636-724-9032
 WWW.DOTECENGINEERING.COM
 ALG@DOTECENGINEERING.COM

ENGINEER DOTec ENGINEERING ADDRESS: 424 JEFFERSON STREET ST CHARLES, MO 63301 PHONE: (636) 724-9872 WEB: www.dotecengineering.com	MANUFACTURER AMERICANA OUTDOORS ADDRESS: #2 INDUSTRIAL DRIVE SALEM, IL 62881 PHONE: (800) 851-0865 WEB: www.americana.com	PROJECT / LOCATION 273 WOODBURY AVE. MARTINSBURG, WV 25404	MODEL 24' x 50' ILLINI SHELTER	DWG. NO. 222129	DRAWN BY TG	DRAWN DATE 8/19/2024	SHEET D9 OF 16 SHEETS
				JOB NO. 222129			
				P.O. NO. P24-188			



(16) PURLIN - SA

PART QTY SHOWN IS FOR (1) SHELTER

SEAL



Dr. Alfonso Gonzalez P.E.
 DOTec Corp
 424 Jefferson Street
 St. Charles, MO 63301
 PH 636-724-9872
 FX 636-724-9032
 WWW.DOTECENGINEERING.COM
 ALG@DOTECENGINEERING.COM

ENGINEER DOTec ENGINEERING ADDRESS: 424 JEFFERSON STREET ST CHARLES, MO 63301 PHONE: (636) 724-9872 WEB: www.dotecengineering.com	MANUFACTURER AMERICANA OUTDOORS ADDRESS: #2 INDUSTRIAL DRIVE SALEM, IL 62881 PHONE: (800) 851-0865 WEB: www.americana.com	PROJECT / LOCATION 273 WOODBURY AVE. MARTINSBURG, WV 25404	MODEL 24' x 50' ILLINI SHELTER	DWG. NO.	222129	DRAWN BY TG	DRAWN DATE	8/19/2024	SHEET D10 OF 16 SHEETS
				JOB NO.	222129		CHECKED BY	REVISION DATE	
				P.O. NO.	P24-188	AY			